

Pottawatomie County KS

Community Health Needs Assessment 2016



A partnership between Community HealthCare System (CHCS), Pottawatomie County Health Department and the communities we serve!



Pottawatomie County Health Department

2016 Community Health Needs Assessment Report

Overview

Periodic Community Health Needs Assessments enhance the health and well-being of Pottawatomie County through strategic initiatives to address the findings of the assessments. The United States Patient Protection and Affordable Care Act requires us to conduct assessments every three years; the first was completed in 2013.

CHCS and the Pottawatomie County Health Department are conducting the 2016 assessment in partnership. The 2016 CHNA will advance from the 2013 efforts and updated population health data. CHCS and the health department have solicited input and consideration from a wide array of persons representing the broad interests of Pottawatomie County communities, with the exception of the Wamego area. The Wamego community partnered with the Riley County CHNA because of healthcare ties.

This CHNA presents updated population health information with community input utilized to determine focus and priorities for 2016-2019. The next steps will require further community input to identify goals and strategies for the Implementation Plan.

Table of Contents

1. Executive Summary	Page 4
2. CHNA Partners	Page 9
3. Methodology	
a. Process	Page 11
b. Data Sources	Page 12
c. Demographics of Community Served	Page 12
d. Community Health Status	Page 13
4. Prioritization of Issues	
a. Public Meetings	Page 26
b. Community Input	Page 26
5. Next Steps	Page 27
6. Detailed Exhibits	
a. Inventory of Health Services – Pottawatomie County	Page 28
b. Patient Origin and Access	Page 56
c. Town Hall and Community Input Participants	Page 58
d. Public Notices	Page 61

2016

Community Health Needs Assessment
Executive Summary

Community HealthCare System

Pottawatomie County, Kansas, Health Department

2016 CHNA Executive Summary

The Patient Protection and Affordable Care Act requires charitable 501(c)(3) hospitals and public health departments to conduct Community Health Needs Assessments and create Implementation Strategies every three years. The first was initiated in 2013 and the second must be adopted in 2016. Identification of needs is to be accomplished through input from a wide variety of community stakeholders and from trusted data sources. The idea behind the CHNA requirement is that charitable and government health organizations are entrusted as stewards of limited resources to improve health. Our charge is to make charitable investments in activities that address the root causes of poor health and to build population health in our communities.

How have we responded to this challenge? First, the health department and CHCS worked together and contracted with a consultant in 2012 to complete a data search for health related information regarding Pottawatomie County. We conducted town hall meetings in 2012 and again in 2015 at various locations throughout the County. We considered how we could apply our resources towards identified health needs to create community benefit. We worked in teams to develop Implementation Strategies, to put them into action, and address our prioritized needs.

A good overview of many health statistics can be found in user-friendly style in the County Health Rankings (which ranks Pottawatomie County 3rd out of 101 participating Kansas Counties in overall health outcomes) <http://www.countyhealthrankings.org/rankings/data/ks>, U.S. Census Bureau State and County Quick Facts <http://www.census.gov/quickfacts/table/PST045215/00>, and Kansas Health Matters <http://www.kansashealthmatters.org/>. The data detail at the end of this document, though not as easy to read, is the detailed CHNA report.

This summary will:

- 1) Reiterate 2013 community health priorities and progress
- 2) Relate 2016 priorities for the renewal CHNA
- 3) Help identify related CHCS and community benefit opportunities
- 4) Position us for adoption of the CHNA and development of Implementation Strategies
- 5) Highlight Data Sources and Recent Findings from the Full Report

1) 2013 Community Health Priorities and (Progress)

a. Mental Health Services

- Access to services (Created online map of mental health services in the County)
- Support for those with mental health needs (Sponsored 4 Mental Health First Aid courses throughout the County)

b. Wellness and Prevention

- Obesity/Inactivity (Initiated farmers market with nutritional education and vouchers)
- Immunizations (Pottawatomie County Health focused efforts in St. Marys)
- Breast health (Identified hospitals in Wamego and CHCS to investigate)

2) 2016 Priorities for the Renewed CHNA

In preparation for the 2016 renewal of the CHNA, town hall meetings were held in Onaga on 11-3-15 and in St. Marys on 11-5-15. Input was also sought through the Onaga, Wheaton, Havensville

Chamber meeting in Havensville on 11-12-15. Additionally, a CHNA presentation was provided to the CHCS Medical Staff on 2-10-16.

Input from these groups is summarized here. There was recognition that the CHNA is an ongoing process to address ongoing issues. There was general consensus that the first CHNA tried to focus on too many issues and that the next three years would be best directed toward continuing efforts against a more narrow focus: obesity and inactivity. It was suggested to use positive terminology, such as improving nutrition and physical activity, and to put emphasis on what healthy outcomes could result: combating heart disease and diabetes. In summary, input yielded the following priorities for consideration of work groups during further planning.

Work to Combat Heart Disease and Diabetes!

a. Nutrition

- *Continue to promote farmers markets
- *Investigate community garden possibilities
- *Offer health fair with blood (Biometric screening)

b. Physical Activity

- *Promote/develop walking/biking trails
- *Pursue worksite and school partnerships for physical activity and wellness

3) Related CHCS and Community Benefit Opportunities

The Patient Protection and Affordable Care Act defines Community Benefit activities as those that benefit the community, rather than the organization, in certain ways. The following is not a comprehensive list, but example parameters include: activities carried out for the purpose of improving community health, has to be in response to a demonstrated community need, must be subsidized by the organization, cannot generate an IP or OP bill, cannot be primarily for marketing, cannot be more beneficial to the organization than to the community. As a 501(c)(3) charitable healthcare system, we must show that we provide Community Benefit.

The health department and CHCS providers and programs are asked to consider how their efforts are, or can be, aligned with our three year CHNA focus to combat heart disease and diabetes. Additionally, we are required to work with community members to develop Implementation Strategies for the nutrition and physical activity plans outlined in #2 above. Some efforts, such as CHCS farmers markets with nutritional vouchers are in place and will continue.

4) Adoption of the CHNA

The Board of Directors for CHCS will be introduced to the 2016 renewal CHNA at their February meeting and asked to consider approving it at their March 2016 meeting. The Pottawatomie County Commissioners will also be asked to approve the 2016 CHNA. Community teams will begin to develop Implementation Strategies upon CHNA approval by these governing bodies.

5) County and State Health Data Sources

Many data sources were utilized for the initial and follow up CHNA for Pottawatomie County, including U.S. Census Bureau: State and County QuickFacts. Data derived from Population Estimates, American Community Survey, Census of Population and Housing, Small Area Income and Poverty Estimates, State and County Housing Unit Estimates, County Business Patterns, Nonemployer Statistics, Economic Census,

Survey of Business Owners, Building Permits, Consolidated Federal Funds Report; County Health Rankings, Kansas Health Matters, and Kansas Vital Statistics.

A good overview of many health statistics can be found in user-friendly style in the County Health Rankings (which ranks Pottawatomie County 3rd out of 101 participating Kansas Counties in overall health outcomes) <http://www.countyhealthrankings.org/rankings/data/ks>, U.S. Census Bureau State and County Quick Facts <http://www.census.gov/quickfacts/table/PST045215/00>, and Kansas Health Matters <http://www.kansashealthmatters.org/>.

The following detail, though not as easy to read, is in the format provided by the consultant in the detailed CHNA report.

- **DEMOGRAPHICS AND ECONOMICS** (tabs 1 – 2): Pottawatomie County has an estimated population of 22,897 residents as of 2014, with a positive percentage change in growth from 2010 to 2014 of 6%. The percent of people living below the poverty level is 9.6%, lower in Pottawatomie County than the Kansas percentage of 13.8. The percent of persons in Pottawatomie County ages 65+ living below poverty level is 8.3%, higher than the State norm of 7.5%.
The per capita income in the County over the past 12 months is \$24,892. The percent of unemployed individuals is 5.1% in the County, which is slightly lower than the Kansas percentage of 5.4%. There are approximately 7,974 households in Pottawatomie County with approximately 2.72 persons per household. The median household income for Pottawatomie County is \$56,854, which is higher than the Kansas median household income of \$51,332. The home ownership rate in the County is 67.5%, which is above the Kansas rate of 64.9%. The median value of owner-occupied housing units in the County is \$128,400, which is lower than the Kansas value of \$176,700.
- **EDUCATION** (tab 3): In Pottawatomie County, 26% of students are eligible for the free or reduced lunch program. The County high school graduation rate as of 2014 is 92%, significantly higher than the Kansas rate of 83%. The student-to-teacher ratio in Pottawatomie County is 12%, slightly lower than Kansas at 14%.
- **MATERNAL & INFANT HEALTH** (tab 4): The percent of births where prenatal care began in the first trimester in Pottawatomie County is 76%, lower than the Kansas percent of 79.4%. The percent of births with low birth weight is 4.6% compared to Kansas at 7.1%. The percentage of WIC mothers breastfeeding exclusively is 11.8%, lower than Kansas at 13.2%. Pottawatomie has a high percentage (91.9%) of mothers who initiate breastfeeding compared to Kansas at 86.1%. The percent of all births to teens ages 15-19 is 3.2%, significantly lower than the State of Kansas at 7.5%.
- **HOSPITALIZATION/PROVIDER PROFILE** (tab 5): The ratio of the population in Pottawatomie County to primary care physicians is 1,827:1; compared to Kansas at 1,380:1. The bacterial pneumonia hospital admission rate (per 100,000) is 345.40, which is higher than the Kansas rate of 244.40. The heart disease hospital admission rate in Pottawatomie County (per 100,000 population) is 288.8 as compared to 266.70 in Kansas. The Chronic Obstructive Pulmonary Disease admission rate is 11.70 in Pottawatomie County, slightly lower than the Kansas rate of 12.70.

- **BEHAVIORAL HEALTH & REHAB (tab 6):** The depression rate for the Medicare population in Pottawatomie County is 14.6%, lower than the Kansas norm of 16.2%. The percent of alcohol-impaired driving deaths is 23%, lower than the Kansas percentage of 35%. The percentage of people in Pottawatomie County with inadequate social support is 15%, just slightly lower than Kansas at 16%.
- **HEALTH RISK PROFILES (tab 7):** The adult obesity rate in Pottawatomie County is 32%, slightly above the Kansas rate of 30%. The percent of adults who drink excessively in Pottawatomie County (14%) is slightly lower than the Kansas percentage of 15%. The percent of people who are physically inactive is 24%, just under the Kansas rate of 25%. The average number of physically unhealthy days reported in the past 30 days is 2.4 in Pottawatomie County versus 2.8 for Kansas overall. The sexually transmitted infection rate (cases per 1,000 population) in Pottawatomie County is 1.5, lower than the Kansas rate of 4.7. Adult smoking rates are slightly higher in Pottawatomie County (19%) than in Kansas overall (18%).
- **UNINSURED (tab 8):** The uninsured population rate in Pottawatomie County is 12%, lower than the Kansas rate of 14%.
- **MORTALITY PROFILE (tab 9):** Major cardiovascular disease and diseases of the heart are the major causes of death in Pottawatomie County. The mortality rate in Pottawatomie County per 100,000 is 749.6 compared to Kansas at 753.9.
- **PREVENTION (tab 10):** The percent of Pottawatomie County infants fully immunized at 24 months is 64%, which is higher than Kansas at 61.5%. The percentage of diabetic screenings in Pottawatomie County is 89%, higher than Kansas at 86%. The percent of the Pottawatomie County population with adequate access to locations for physical activity is 50% compared to Kansas at 71%. The percentage of adults in the County engaging in regular physical activity (aerobic and strengthening exercise) is 14.6% compared to Kansas at 17.9%. The percentage of adults reporting fair or poor health is 9% in Pottawatomie County versus 13% for Kansas. The percentage of adults aged 20 and over reporting no leisure time physical activity is 24% in Pottawatomie County versus 25% for Kansas.

2. CHNA Partners

Community HealthCare System and the Pottawatomie County Health Department are collaborating within the communities of Pottawatomie County (with the exception of Wamego) to accomplish this CHNA.

a. Community HealthCare System

Administrative offices and contact information:

Todd Willert, CEO
Community HealthCare System
120 West 8th Street
Onaga, Kansas 66521
785-889-5002
toddwillert@chcsks.org

CHCS is a unique, rural and independent healthcare system with a service area of over 10,000 square miles in Northeast Kansas. CHCS owns and operated family practice clinics in seven different communities, along with two nursing homes, one assisted living unit, a home health agency, four rehabilitation/fitness centers and two hospitals operating under the same license. Maintaining this system are 471 employees including 22 local family practice physicians and midlevel practitioners. CHCS also has affiliations with an additional 50 specialty providers.

Within Pottawatomie County, CHCS operates hospitals in Onaga and St. Marys; family practice clinics in Onaga, St. Marys and Westmoreland, a nursing home in St. Marys, an assisted living program in Onaga, and a fitness center in Onaga.

CHCS has a designated Critical Access Hospital, is certified as an Emergent Stroke-Ready Hospital, a Level IV Trauma Certified Hospital, and has been continually awarded national for Home Health and Long Term Care. CHCS attributes its success to its board, staff and providers living their Mission: “to Enrich the Health and Lives of the People we Serve”.

CHCS Services include:

Hospital Inpatient and Outpatient Services
X-ray, CT, MRI, Digital Mammography
Family Practice
Fitness Center
Specialty Clinics
Surgical Suite
Home Health
Nutrition Services

Birth Center
Lab
Rehab/Therapy Services
Assisted Living
Long Term Care Facility
Emergency Services
DME
Swing Bed

2. CHNA Partners – Continued

b. Pottawatomie County Health Department

Office and contact information:

Leslie Campbell, Director and Health Officer
320 E Main Po Box 310
Westmoreland, KS 66549
785-457-3719
lcampbell@pottcounty.org

Pottawatomie County Health Department was established in 1973 by the County Commissioners. The commissioners are the local board of health for the department. Leslie Campbell, RN has been the County Health Director and Health Officer for 16 years and has worked at the county for 25 years. The department has eight full-time and five part-time employees.

The department's mission was adopted in 2013: "It is our mission to engage, encourage, and build community partnerships for the purpose of identifying and promoting a healthy living environment for the stakeholders of Pottawatomie County."

Services Include:

- Immunizations for Children and Adults
- Physicals for ages 0-18 by registered nurse
- Well Woman & Family Planning—annual exams, breast exams, STD exams, birth control, pregnancy testing, control, and healthy lifestyle promotion
- STD testing including HIV for men and women
- M&I Program—Education and support for pregnant women and infants under 1 yr
- Healthy Start Home Visitor Program—Education and support for pregnant women and families with a baby
- Car Seat Program
- WIC—supplemental food program for pregnant and breastfeeding women and children under five years of age – with Riley County.
- Childcare Licensing
- Communicable Disease Information
- Health Promotion and Education Programs
- Dental Screening provided by Dental Hygienist
- Fluoride Varnish Application
- TB Skin Testing
- Blood Pressure Checks
- Blood Lead Screening
- Toenail Trimming by Appt.

3. CHNA Methodology

a. Process

Town hall meetings were held in Onaga and St. Marys in November of 2015. These were promoted in advance through local chamber of commerce groups, CHCS, posters throughout the communities and local newspapers. Interactive presentations were also held with the Onaga-Wheaton-Havensville Chamber and with CHCS Medical Staff. At each meeting there was discussion of quantitative data, current CHNA efforts, and future focus.

CHNA Work Plan Project Timeline & Roles 2016		
Date (Start-Finish)	Lead	Task
Jan 15	CHCS/Pott. Co. Health Dept.	Identify the Team and Resources Define the Purpose and Scope
Feb-Sept 15	CHCS	Collect and Analyze Data -Begin collecting data and developing 2016 CHNA Executive Summary Community Profile/Demographics/Economics Inventory of Existing County Health Resources Patient Origin & Access
Sept 15	CHCS/Pott. Co. Health Dept.	Develop Town Hall Meeting PowerPoint Presentation and input questions
Oct 15	CHCS	Prepare/send out press release to local media announcing upcoming Town Hall Meetings. Send hospital/Health department invite to required local lists
Nov 15 – Feb 16	CHCS/Pott. Co. Health Dept.	Review previous priorities/progress; Hold Town Hall and input meetings
Feb 16	CHCS	Complete Analysis of Input Received at Town Hall and other input meetings
Feb 16	CHCS/Pott. Co. Health Dept.	Produce draft and finalize CHNA report
Feb16	CHCS	Communicating documented results. CHNA presentation to the CHCS Board
Mar-16	CHCS/Pott. Co. Health Dept.	Gain CHCS Board and Pott. Co. Commisisoners' approval for CHNA; submit and post online
Apr-16	CHCS/Pott. Co. Health Dept.	Planning for Actions and Monitoring Progress- Conduct Implementation Plan Leadership meeting
May 16	CHCS/Pott. Co. Health Dept.	Secure participants and continue meetings for Implementation Planning as needed
Jun16	CHCS/Pott. Co. Health Dept.	Implementation Plan Finalized and adopted

3. CHNA Methodology

b. Data Sources

Data sources utilized for this CHNA include gathering opinions from local sources and quantitative data from secondary sources. Many secondary data sources were utilized for the CHNA for Pottawatomie County, including U.S. Census Bureau, State and County QuickFacts, data derived from Population Estimates, American Community Survey, Census of Population and Housing, Small Area Income and Poverty Estimates, State and County Housing Unit Estimates, County Business Patterns, Non-employer Statistics, Economic Census, Survey of Business Owners, Building Permits, Consolidated Federal Funds Report; County Health Rankings, Kansas Health Matters, and Kansas Vital Statistics.

A good overview of many health statistics can be found in user-friendly style in the County Health Rankings (which ranks Pottawatomie County 3rd out of 101 participating Kansas Counties in overall health outcomes) <http://www.countyhealthrankings.org/rankings/data/ks>, U.S. Census Bureau State and County Quick Facts <http://www.census.gov/quickfacts/table/PST045215/00>, and Kansas Health Matters <http://www.kansashealthmatters.org/>.

3. CHNA Methodology

c. Demographics of Community Served

The community served is defined as all of Pottawatomie County except Wamego. Pottawatomie County is an expansive county of 551,692 acres or 862 square miles (Pottawatomie County). The northern portion of the county is largely agricultural while many southern areas consist of existing and planned developments.

The county contains several cities and towns including: Belvue, Blaine, Duluth, Emmett, Fostoria, Havensville, Louisville, East Manhattan, Olsburg, Onaga, St George, St Marys, Wamego, Westmoreland and Wheaton. Homeownership in Pottawatomie County is 71.1% compared to the state average of 60.2% (Ks Health Matters)

Pottawatomie County is a growing county, population of 22,302 (2014 Census update), with a continued expansion of new construction in the housing markets and business sectors. Manufacturing businesses, GTM and Caterpillar, make up the two largest employers in the county and CHCS shares third place with Walmart (Pottawatomie County Economic Dev.)

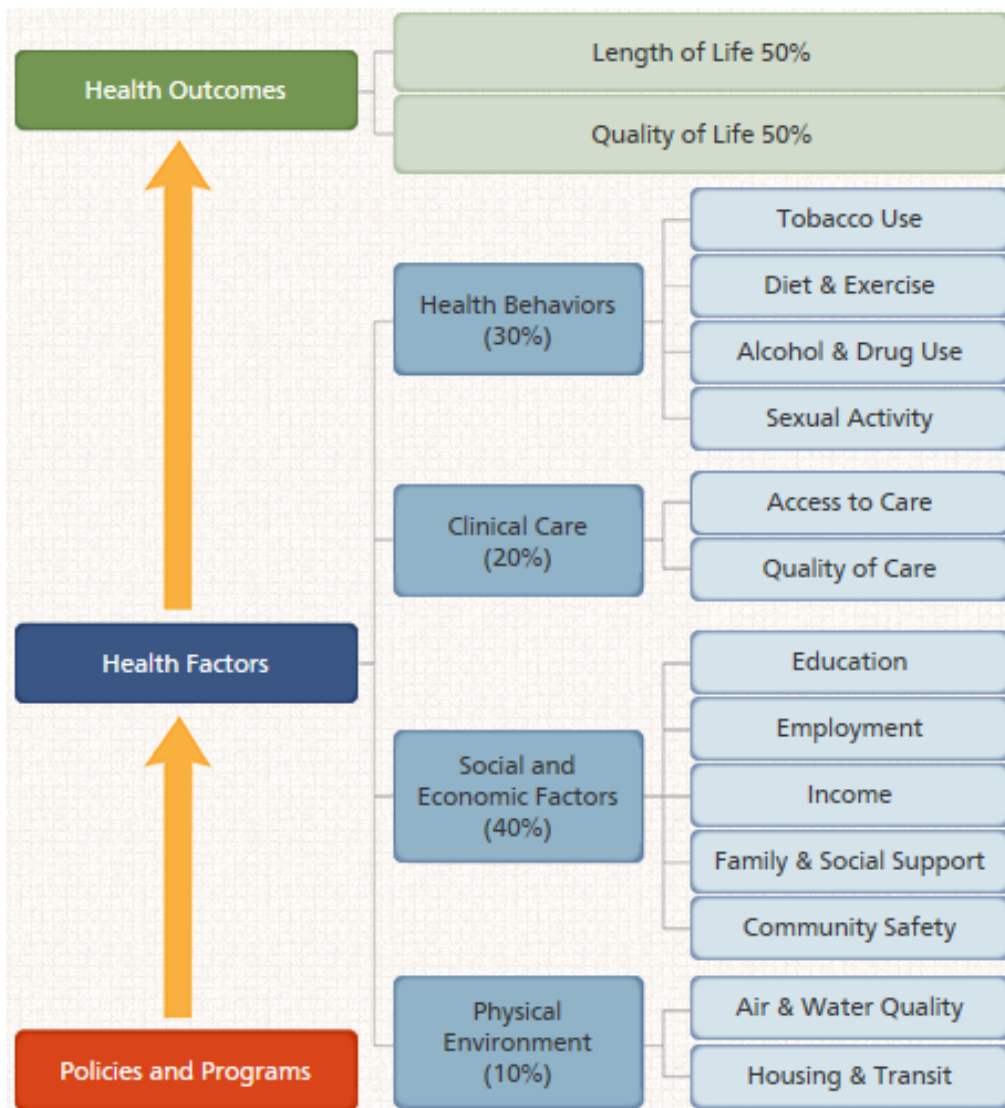
Median household income (in 2014 dollars) for Pottawatomie County was \$60,479 compared with a Kansas median of \$51,872 (KS Quick Facts). According to Small Area Income and Poverty Estimates in 2014 and Small Area Health Insurance Estimates, in 2013, 10% of the county's population was in poverty and 11.1% of the population under the age of 65 did not have health insurance. 94% of the county's population is white (KS Quick Facts 2014); all other races make up less than 2% each of the total population.

The county is home to several public and private school systems, including a High School nationally recognized for academics, two State Lakes and Tuttle Creek Reservoir. In 2016 Wichita State University Center for Economic Development and Business Research identified Pottawatomie County as one of three Kansas Counties predicted to see 80 – 115% population growth over the next fifty years.

3. CHNA Methodology

d. Community Health Status – Pottawatomie County, KS

Community health outcomes are impacted by factors including behavior, access to care, social and economic factors and the physical environment. The 2014 County Health Rankings for Pottawatomie County, KS appear below. (The Robert Wood Johnson Foundation collaborates with the University of Wisconsin Population Health Institute to release annual County Health Rankings.)



2014 County Health Rankings for Pottawatomie County, Kansas

www.countyhealthrankings.org	Pottawatomie County	Kansas	Rank (of 98 counties)
Health Outcomes			3
<i>Length of Life</i> *How long people live			5
<i>Quality of Life</i> *How healthy people feel while alive			7
Poor or fair health *% of adults reporting fair or poor health	9%	13%	
Poor physical health days *Average # of physically unhealthy days reported in last 30 days	2.0%	3.0%	
Poor mental health days *Average # of mentally unhealthy days reported in last 30 days	2.4%	2.8%	
Low birthweight *% of live births with low birthweights	6.1%	7.2%	
Health Factors			8
<i>Health Behaviors</i>			20
Adult smoking *% of adults that report smoking >=100 cigarettes and currently smoking	19%	18%	
Adult obesity *% of adults who reported a BMI of >=30	32%	30%	
Food environment index *Index of factors that contribute to a healthy food environment	8.5	7.5	
Physical inactivity *% of adults age 20 and older reporting no leisure time physical activity	24%	25%	
Access to exercise opportunities *% of population with adequate access to locations for physical activity	50%	71%	
Excess drinking	14%	15%	
Alcohol-impaired driving deaths	23%	35%	
Sexually transmitted infections *Chlamydia rate per 100,000 population	146	369	
Teen births *Age 15 to 19- rate per 1,000 female population	26	41	
<i>Clinical Care</i>			24
Uninsured % of population under 65 without health insurance	12%	14%	
Primary Care Physicians *Ratio of population to primary care physicians	1,827:1	1,380:1	
Dentists *Ratio of population to dentists	4,460:1	1,942:1	
Mental health providers *Ratio of population to mental health providers	11,151:1	861:1	
Preventable hospital stays *Hospitalization rate for ambulatory-care sensitive conditions per 1,000 Medicare enrollees	67	64	
Diabetic screening *% of diabetic Medicare enrollees that receive HbA1c monitoring	89%	86%	
Mammography screening % of female Medicare enrollees that receive mammography screening	60%	64%	

2014 County Health Rankings for Pottawatomie County, Kansas (continued)

<i>Social & Economic Factors</i>			<i>7</i>
High school graduation	93%	83%	
Some college	71%	68%	
Unemployment	4.8%	5.7%	
Children in poverty	13%	19%	
Inadequate social support	15%	16%	
Children in single-parent households	17%	29%	
Violent crime	209	375	
Injury deaths	62	63	
<i>Physical Environment</i>			<i>23</i>
Air pollution- particulate matter	9.1	10.9	
Drinking water violations	0%	4%	
Severe housing problems	11%	13%	
Driving alone to work	79%	82%	
Long commute – driving alone	25%	20%	
Source: County Health Rankings			

www.countyhealthrankings.org/app/kansas/2014/rankings/pottawatomie/county/outcomes/overall/snapshot

Additional quantitative community health indicators based upon a set of published health indicators appear below, organized by ten areas of focus (10 TABS)

TAB 1. Demographic Profile
TAB 2. Economic/Business Profile
TAB 3. Educational Profile
TAB 4. Maternal and Infant Health Profile
TAB 5. Hospitalization / Providers Profile
TAB 6. Behavioral Health Profile
TAB 7. Risk Indicators & Factors
TAB 8. Uninsured Profile
TAB 9. Mortality Profile
TAB 10. Preventative Quality Measures

Tab 1 & 2 Demographics/Economics

County: Pottawatomie

	Pottawatomie	Kansas
People QuickFacts		
Population, 2014 estimate	22,897	2,904,021
Population, 2013 estimate	22,670	2,895,801
Population, 2010 (April 1) estimates base	21,604	2,853,132
Population, percent change - April 1, 2010 to July 1, 2014	6.0%	1.8%
Population, percent change - April 1, 2010 to July 1, 2013	4.9%	1.5%
Population, 2010	21,604	2,853,118
Persons under 5 years, percent, 2013	8.2%	6.9%
Persons under 18 years, percent, 2013	29.7%	25.0%
Persons 65 years and over, percent, 2013	12.9%	14.0%
Female persons, percent, 2013	50.0%	50.2%
	Pottawatomie	Kansas
Housing units, 2013	1,239,706	132,802,859
Homeownership rate, 2009-2013	67.5%	64.9%
Housing units in multi-unit structures, percent, 2009-2013	17.7%	26.0%
Median value of owner-occupied housing units, 2009-2013	\$128,400	\$176,700
Households, 2009-2013	7,974	1,110,440
Persons per household, 2009-2013	2.72	2.51
Per capita money income in past 12 months (2013 dollars), 2009-2013	\$24,892	\$26,929
Median household income, 2009-2013	\$56,854	\$51,332
Persons below poverty level, percent, 2009-2013	9.0%	13.7%

	Pottawatomie	Kansas
Business QuickFacts		
Private nonfarm establishments, 2013	561	73,816 ⁽¹⁾
Private nonfarm employment, 2013	8,174	1,150,401 ⁽¹⁾
Private nonfarm employment, percent change, 2012-2013	1.1%	1.4% ⁽¹⁾
Nonemployer establishments, 2012	1,628	188,168
Total number of firms, 2007	2,463	237,040
Black-owned firms, percent, 2007	F	2.4%
American Indian- and Alaska Native-owned firms, percent, 2007	F	0.9%
Asian-owned firms, percent, 2007	F	2.0%
Native Hawaiian- and Other Pacific Islander-owned firms, percent, 2007	F	S
Hispanic-owned firms, percent, 2007	F	2.4%
Women-owned firms, percent, 2007	S	27.5%
Manufacturers shipments, 2007 (\$1,000)	329,645	76,751,828
Merchant wholesaler sales, 2007 (\$1,000)	160,957	45,863,865
Retail sales, 2007 (\$1,000)	283,927	34,538,332
Retail sales per capita, 2007	\$14,582	\$12,444
Accommodation and food services sales, 2007 (\$1,000)	11,780	4,192,347
Building permits, 2013	162	8,285

Source: U.S. Census Bureau: State and County QuickFacts. Data derived from Population Estimates, American Community Survey, Census of Population and Housing, Small Area Income and Poverty Estimates, State and County Housing Unit Estimates, County Business Patterns, Nonemployer Statistics, Economic Census, Survey of Business Owners, Building Permits, Consolidated Federal Funds Report

Tab 3 Public Schools Health Delivery Profile.

	Health Indicators	Pott Co	KS	Source
1	High school graduation Rate, 2014	92%	83%	County Health Rankings
2	Some college (Rate), 2014	71%	68%	County Health Rankings
3	Student-to-Teacher Ratio, 2013-2014	12.0	14.0	Kansas Health Matters
4	Students Eligible for the Free Lunch Program (%), 2013-2014	26.0%	40.4%	Kansas Health Matters Statistics
5	Poverty Status by School Enrollment (%)	8.1%	13.0%	Kansas Health Matters
6	Bachelor's degree or higher, % of person age 25+, 2009-2013	29.3%	30.3%	People Quickfacts- Kansas Health Matters

TAB 4 Maternal and Infant Health Profile. Tracking maternal & infant care patterns are vital in understanding the foundation of family health.

#	Vital Statistics: Maternal and Infant Health Profile	Pottawatomie	State of KS	Source
1	Total Live Births, 2010	382	40,439	Kansas Vital Statistics
2	Total Live Births, 2011	354	39,628	Kansas Vital Statistics
3	Total Live Births, 2012	370	40,304	Kansas Vital Statistics
4	Total Live Births, 2013	353	38,805	Kansas Vital Statistics
5	Total Live Births, 2014	345	39,193	Kansas Vital Statistics
6	Total Live Births, 2010-2014 - Five year Rate (%)	16.2%	13.80%	Kansas Vital Statistics
7	Low Weight Births (under 2,500 grams / 5 lb. 8 oz.), 2014	11	2,768	Kansas Vital Statistics
8	Percent Premature (<37 weeks), 2014	5.5%	8.7%	Kansas Vital Statistics
10	Births with Prenatal Care in First 3 Months, 2014	267	30,981	Kansas Vital Statistics
11	Percentage of Mothers Who Initiate Breastfeeding	91.9%	86.1%	Kansas Vital Statistics
12	Mothers Who Smoke Any Time During Pregnancy	38	4679	Kansas Vital Statistics
13	Percentage of Mothers who Smoke Any Time During Pregnancy	11%	12%	Kansas Vital Statistics

#	Health Indicator	Pott. Co.	State of KS	Source
1	Percent of all Births Occurring to Teens (15-19)	3.2	7.5	Kansas Health Matters
2	Percent of WIC Mothers Breastfeeding Exclusively (%)	11.8	13.2	Kansas Health Matters
3	Percent of Births with Low Birth Weight (%)	4.6	7.1	Kansas Health Matters
4	Percent of Births with Inadequate Birth Spacing (%)	13.8	10.7	Kansas Health Matters
5	Percent of Births Where Prenatal Care began in First Trimester (%)	76.0	79.4	Kansas Health Matters

TAB 5 Hospitalization/Provider Profile Understanding provider access and disease patterns are fundamental in healthcare delivery. Listed below are several vital county statistics.

#	Kansas Hospital Assoc- PO101- Patient Origin by Hospital- Inpatient	CHCS (only)		
		FFY2013	FFY2014	FFY2015
1	Total Discharges	747	591	553
2	Total IP Discharges-Age 0-17	24	9	29
3	Total IP Discharges-Age 18-44	23	31	28
4	Total IP Discharges-Age 45-64	105	80	80
5	Total IP Discharges-Age 65-74	107	65	62
6	Total IP Discharges-Age 75+	272	217	218
7	Psychiatric	3	4	6
8	Obstetric	117	96	65
9	Newborn	96	89	65
10	Surgical %	6.3%	5.4%	5.2%

	Health Indicators	Pottawatomie	State of KS	Source
1	Injury Hospital Admission Rate (per 100,000 pop), 2011-2013	716.80	865.2	Kansas Health Matters
2	Heart Disease Hospital Admission Rate (per 100,000 Pop), 2011-2013	288.8	266.70	Kansas Health Matters
3	Congestive Heart Failure Hospital Admission Rate (per 100,000 Pop), 2011-2013	144.60	176.80	Kansas Health Matters
4	Chronic Obstructive Pulmonary Disease (COPD) Hospital Admission Rate (per 100,000), 2011-2013	112.70	123.70	Kansas Health Matters
5	Bacterial Pneumonia Hospital Admission Rate (per 100,000), 2011-2013	345.40	244.40	Kansas Health Matters
6	Preventable hospital stays, 2014	67	64	County Health Rankings
7	Primary care physicians per 1 (2014)	1,827:1	1,380:1	County Health Rankings

TAB 6 Behavioral Health & Rehab Services Profile. Behavioral health and rehabilitation care provide another important indicator of community health status.

TAB	Health Indicators	Pott. Co. 2015	Kansas	Source
6	1 Depression:Medicare Population, 2012	14.6	16.2	Centers for Medicare & Medicaid Services
6	2 Alcohol-Impaired Driving Deaths, 2014	23%	35%	County Health Rankings
6	3 Inadequate social support	15%	16%	County Health Rankings
6	4 Poor mental health days	2.4	2.8	County Health Rankings

TAB 7 Health Risk Profiles. Knowing community health risk factors and disease patterns can aid in the understanding “next steps” to improve health. Being overweight/obese; smoking, drinking in excess, not exercising etc can lead to poor health.

	Health Indicators	Pottawatomie	State of KS	Source
1	Adult obesity, 2014	32%	30%	County Health Rankings
2	Adult smoking, 2014	19%	18%	County Health Rankings
3	Excessive drinking, 2014	14%	15%	County Health Rankings
5	Inadequate social support, 2014	15%	16%	County Health Rankings
5	Physical inactivity, 2014	24%	25%	County Health Rankings
6	Poor mental health days, 2014	2.4	2.8	County Health Rankings
7	Poor physical health days, 2014	2.0	3.0	County Health Rankings
8	Sexually Transmitted Disease Rate (cases per 1,000 population), 2014	1.5	4.7	Kansas Health Matters
9	Increased Lead Risk in Housing Rate (%), 2000	32.98	28.3	Kansas Health Matters
10	Age-Adjusted Years of Potential Life Lost - Cancer (Yrs p/ 100,000 Pop), 2012-2014	1261.9	1284.70	Kansas Health Matters
11	Age-Adjusted Years of Potential Life Lost – Diabetes (Yrs p/ 100,000 Pop) , 2008-2010	119.4	162.0	Kansas Health Matters
12	Age-Adjusted Years of Potential Life Lost - Heart Disease (Yrs p/ 100,000 Pop), 2012-2014	757.4	847.50	Kansas Health Matters

TAB 8 Uninsured Profiles. Based on synthetic estimations, the number of insured is documented below.

	Health Indicator	Pottawatomie	KS	Source
1	Uninsured	12%	14%	County Health Rankings

TAB 9 Mortality Profile. The leading causes of county deaths are listed below. Areas of higher than expected are so noted.



Causes of Death by County of Residence, KS 2012				
#	Selected Causes of Death (ICD-10)	Pottawatomie	State of KS	Source
	TOTAL	165	25,084	Kansas Vital Statistics
1	Major Cardio-vascular Disease	47	7,458	Kansas Vital Statistics
2	Disease of Heart	32	5,314	Kansas Vital Statistics
3	All Malignant Neoplasms	37	5,406	Kansas Vital Statistics
4	Ischemic Heart Disease	16	2,990	Kansas Vital Statistics
5	All Other Causes	28	4215	Kansas Vital Statistics
6	Other Heart Diseases	16	2156	Kansas Vital Statistics
7	Chronic Lower Respiratory Diseases	19	1,680	Kansas Vital Statistics
8	Malignant Neoplasms of Digestive Organs	8	1,288	Kansas Vital Statistics
9	Cerebrovascular Diseases	13	1,331	Kansas Vital Statistics
10	Malignant Neoplasms of Respiratory and Intrathoracic Organs	8	1,537	Kansas Vital Statistics

TAB 10 Preventive Health Profile. The following table reflects future health of county. This information also is an indicator of community awareness of preventative measures.



Indicator http://www.countyhealthrankings.org (Derived from the County Snapshot 2014)	Pottawatomie	KS
Diabetic screening	89%	86%
Access to exercise opportunities	50%	71%
Mammography screening	60%	64%
Poor or fair health (Self Assess)	9%	13%
Physical Inactivity	24%	25%
HealthMatters.com - Indicator Comparison Report	Pottawatomie	State of KS
Percent of Infants Fully Immunized at 24 Months (%)	64.0%	61.5%
Percentage of Adults Doing Enough Physical Activity To Meet Both The Aerobic AND Strengthening Exercise (%)	14.6%	17.9%

Indicator Comparison Report



Age-adjusted Alzheimer's Disease Mortality Rate per 100,000 population

Location	Status	Deaths/ 100,000 population	Source	Measurement Period
Comparison: KS State Value				
Period: 2012-2014				
County: Pottawatomie		18.2	Kansas Department of Health and Environment	2012-2014
Comparison: U.S. Value				
Period: 2012-2014				
State: Kansas		21.7	Kansas Department of Health and Environment	2012-2014


Age-adjusted Cancer Mortality Rate per 100,000 population

Location	Status	Deaths/ 100,000 population	Source	Measurement Period
Comparison: KS State Value				
Period: 2012-2014				
County: Pottawatomie		184.8	Kansas Department of Health and Environment	2012-2014
Comparison: U.S. Value				
Period: 2012-2014				
State: Kansas		165.1	Kansas Department of Health and Environment	2012-2014

Age-adjusted Cerebrovascular Disease Mortality Rate per 100,000 population

Location	Status	Deaths/ 100,000 population	Source	Measurement Period
Comparison: KS State Value				
Period: 2012-2014				
County: Pottawatomie		57.4	Kansas Department of Health and Environment	2012-2014
Comparison: U.S. Value				
Period: 2012-2014				
State: Kansas		38.3	Kansas Department of Health and Environment	2012-2014

Age-adjusted Chronic Lower Respiratory Disease Mortality Rate per 100,000 population

Location	Status	Deaths/ 100,000 population	Source	Measurement Period
Comparison: KS State Value				
Period: 2012-2014				
County: Pottawatomie		68.0	Kansas Department of Health and Environment	2012-2014

© Healthy Communities Institute, Kansas Health Matters


Comparison: U.S. Value Period: 2012-2014		Status	Deaths/ 100,000 population	Source	Measurement Period
---	--	--------	----------------------------------	--------	-----------------------

State: Kansas		50.1	Kansas Department of Health and Environment	2012-2014
---------------	---	------	---	-----------

Age-adjusted Diabetes Mortality Rate per 100,000 population

Location	Status	Deaths/ 100,000 population	Source	Measurement Period
----------	--------	----------------------------------	--------	-----------------------

Comparison: KS State Value
Period: 2012-2014

County: Pottawatomie		13.0	Kansas Department of Health and Environment	2012-2014
----------------------	---	------	---	-----------

Comparison: U.S. Value
Period: 2012-2014

State: Kansas		19.3	Kansas Department of Health and Environment	2012-2014
---------------	---	------	---	-----------

Age-adjusted Heart Disease Mortality Rate per 100,000 population

Location	Status	Deaths/ 100,000 population	Source	Measurement Period
----------	--------	----------------------------------	--------	-----------------------

Comparison: KS State Value
Period: 2012-2014

County: Pottawatomie		152.0	Kansas Department of Health and Environment	2012-2014
----------------------	---	-------	---	-----------

Comparison: U.S. Value
Period: 2012-2014

State: Kansas		155.9	Kansas Department of Health and Environment	2012-2014
---------------	---	-------	---	-----------

Age-adjusted Suicide Mortality Rate per 100,000 population

Location	Status	Deaths/ 100,000 population	Source	Measurement Period
----------	--------	----------------------------------	--------	-----------------------

Comparison: KS State Value
Period: 2012-2014

County: Pottawatomie		11.0	Kansas Department of Health and Environment	2012-2014
----------------------	---	------	---	-----------

Comparison: U.S. Value
Period: 2012-2014

State: Kansas		15.6	Kansas Department of Health and Environment	2012-2014
---------------	---	------	---	-----------

Age-adjusted Mortality Rate per 100,000 population

Location	Status	Deaths/ 100,000 population	Source	Measurement Period
----------	--------	----------------------------------	--------	-----------------------

Comparison: KS State Value
Period: 2012-2014

Location	Status	Deaths/ 100,000 population	Source	Measurement Period
County: Pottawatomie		749.6	Kansas Department of Health and Environment	2012-2014
Comparison: U.S. Value				
Period: 2012-2014				

State: Kansas		753.9	Kansas Department of Health and Environment	2012-2014
---------------	--	-------	---	-----------

Age-adjusted Nephritis, Nephrotic Syndrome, Nephrosis Mortality Rate per 100,000 population

Location	Status	Deaths/ 100,000 population	Source	Measurement Period
----------	--------	----------------------------------	--------	-----------------------

Comparison: KS State Value
Period: 2012-2014

County: Pottawatomie		15.6	Kansas Department of Health and Environment	2012-2014
----------------------	--	------	---	-----------

Comparison: U.S. Value
Period: 2012-2014

State: Kansas		17.1	Kansas Department of Health and Environment	2012-2014
---------------	--	------	---	-----------

Age-adjusted Traffic Injury Mortality Rate per 100,000 population

Location	Status	Deaths/ 100,000 population	Source	Measurement Period
----------	--------	----------------------------------	--------	-----------------------

Comparison: KS State Value
Period: 2012-2014

County: Pottawatomie		9.0	Kansas Department of Health and Environment	2012-2014
----------------------	--	-----	---	-----------

Comparison: U.S. Value
Period: 2012-2014

State: Kansas		12.8	Kansas Department of Health and Environment	2012-2014
---------------	--	------	---	-----------

Age-adjusted Unintentional Injuries Mortality Rate per 100,000 population

Location	Status	Deaths/ 100,000 population	Source	Measurement Period
----------	--------	----------------------------------	--------	-----------------------

Comparison: KS State Value
Period: 2012-2014

County: Pottawatomie		29.2	Kansas Department of Health and Environment	2012-2014
----------------------	--	------	---	-----------

Comparison: U.S. Value
Period: 2012-2014

State: Kansas		40.1	Kansas Department of Health and Environment	2012-2014
---------------	--	------	---	-----------

4. Prioritization of Issues

a. Public meetings

All Town Hall & Community Input priority-setting processes involve the input of key stakeholders in attendance. Individuals and organizations attending the Town Hall and other input meetings were critically important to the success of the CHNA. The following list outlines partners sought for the Town Hall meetings: local hospital, public health community, mental health community, community-based clinics, service providers, local residents, community leaders, opinion leaders, school leaders, business leaders, local government, faith-based organizations and persons, people with chronic conditions, uninsured community members, low income residents, and minority groups.

Pottawatomie County's Town Hall meetings were held in early November with one on Tuesday, November 3, 2015 at 5 pm at the Senior Center in Onaga, KS and the second meeting on Thursday, November 5, 2015 at 12:30 pm at the George J Perry Memorial Armory in St Marys, KS. CHCS CEO, Todd Willert provided an introduction and Mindy Robbins, Susie Kufahl, and Leslie Campbell facilitated the 1 ½ hour session meetings with a combined total of nineteen (19) attendees.

The following Town Hall agenda was conducted:

1. Welcome & Introductions
2. Review the purpose, definition and role of conducting the CHNA
3. Present / Review of historical County Health Indicators
4. Facilitate Town Hall participant discussion of data (probe health strengths /concerns). Reflect on size and seriousness of any health concerns cited and discuss current community health strengths.
5. Engage Town Hall participants to rank community health concerns cited.
6. Close meetings by reflecting on the health needs / community voting results. Inform participants on "next steps".

At the end of each Town Hall session, community members were encouraged to continue to contribute ideas to both hospital and health department leaders via email or personal conversations.

Two additional presentations were provided. One at the Onaga, Havensville, Wheaton Chamber meeting over the lunch hour on November 12, 2015. Susie Kufahl provided the presentation with 16 members in attendance. The final presentation was provided by Mindy Robbins at the Medical Staff meeting on February 10, 2016 with 30 attendees. (Note: detail rosters of meeting attendees are in Section 6.c.)

4. b. Community input

The following is the combined input from the two town hall meetings, the Medical Staff meeting and the chamber meeting.

- Extend the CHCS mental health access website link to more websites.
- We focused on too many goals during the last assessment cycle
- There's not a lot more that we can do at this time for mental health
- Maintain focus on obesity and inactivity
- Local physicians and midlevel practitioners have a focus on preventing heart disease and diabetes
- Use positive concepts: nutrition and activity instead of obesity and inactivity
- Continue and expand farmers markets
- Consider community gardens
- Utilize chambers more
- Offer a health fair with blood biometric screening
- Link websites to the CHCS website mental health links
- Encourage schools and exercise facilities to partner
- Improve the walking environment – walking/biking trails, walking to school bus
- Advertise
- Find a champion

In summary, there is a priority to work with nutrition and physical activity to prevent heart disease and diabetes. The other ideas all contribute to this direction.

5. Next Steps

- The CHNA is brought to the CHCS Board and the Pottawatomie County Commissioners for approval
- Publish CHNA
- Implementation planning meetings
- Finalize and adopt Implementation Plan

6. Detailed Exhibits

a. Inventory of health services – Pottawatomie County, KS

Inventory of Health Services - Pottawatomie County KS				
Cat	Services offered in county Yes / No	Hospital	HLTH Dept	Other
Clinic	Primary Care	yes		
Hosp	Alzheimer Center			
Hosp	Ambulatory Surgery Centers			
Hosp	Arthritis Treatment Center			
Hosp	Bariatric/weight control services	yes		
Hosp	Birthing/LDR/LDRP Room	yes		
Hosp	Breast Cancer			
Hosp	Burn Care			
Hosp	Cardiac Rehabilitation	yes		yes
Hosp	Cardiac Surgery			
Hosp	Cardiology services	yes		yes
Hosp	Case Management	yes		
Hosp	Chaplaincy/pastoral care services	yes		
Hosp	Chemotherapy	yes		
Hosp	Colonoscopy	yes		
Hosp	Crisis Prevention			
Hosp	CTScanner	yes		
Hosp	Diagnostic Radioisotope Facility	yes		
Hosp	Diagnostic/Invasive Catheterization			
Hosp	Electron Beam Computed Tomography (EBCT)			
Hosp	Enrollment Assistance Services	yes		
Hosp	Extracorporeal Shock Wave Lithotripter (ESWL)			
Hosp	Fertility Clinic			
Hosp	FullField Digital Mammography (FFDM)	yes		
Hosp	Genetic Testing/Counseling			
Hosp	Geriatric Services	yes		
Hosp	Heart- Cardiology	yes		
Hosp	Hemodialysis			
Hosp	HIV/AIDS Services		yes	
Hosp	Image-Guided Radiation Therapy (IGRT)			
Hosp	Inpatient Acute Care - Hospital services	yes		
Hosp	Intensity-Modulated Radiation Therapy (IMRT) 161			
Hosp	Intensive Care Unit			
Hosp	Intermediate Care Unit	yes		
Hosp	Interventional Cardiac Catheterization			
Hosp	Isolation room	yes		
Hosp	Kidney			
Hosp	Liver	yes		
Hosp	Lung	yes		
Hosp	Magnetic Resonance Imaging (MRI)	yes		
Hosp	Mammograms	yes		
Hosp	Mobile Health Services	yes		
Hosp	Multislice Spiral Computed Tomography (<64 slice CT)	yes		
Hosp	Multislice Spiral Computed Tomography (<64+ slice CT)			
Hosp	Neonatal			
Hosp	Neurological services			yes
Hosp	Obstetrics	yes		
Hosp	Occupational Health Services	yes		
Hosp	Oncology Services			yes
Hosp	Orthopedic services	yes		yes
Hosp	Outpatient Surgery	yes		
Hosp	Pain Management	yes		
Hosp	Palliative Care Program			

Inventory of Health Services - Pottawatomie County KS				
Cat	Services offered in county Yes / No	Hospital	HLTH Dept	Other
Hosp	Pediatric	yes	yes	
Hosp	Physical Rehabilitation	yes		yes
Hosp	Positron Emission Tomography (PET)			
Hosp	Positron Emission Tomography/CT (PET/CT)	yes		
Hosp	Psychiatric Services	yes		
Hosp	Radiology, Diagnostic	yes		
Hosp	Radiology, Therapeutic			
Hosp	Reproductive Health		yes	
Hosp	Robotic Surgery			
Hosp	Shaped Beam Radiation System 161			
Hosp	Single Photon Emission Computerized Tomography (SPECT)			
Hosp	Sleep Center	yes		
Hosp	Social Work Services	yes		yes
Hosp	Sports Medicine			
Hosp	Stereotactic Radiosurgery			
Hosp	Swing Bed Services	yes		
Hosp	Transplant Services			
Hosp	Trauma Center- Level 4	yes		
Hosp	Ultrasound	yes		yes
Hosp	Women's Health Services	yes	yes	
Hosp	Wound Care	yes		
SR	Adult Day Care Program	yes		
SR	Assisted Living	yes		yes
SR	Home Health Services	yes		yes
SR	Hospice	yes		yes
SR	LongTerm Care	yes		yes
SR	Nursing Home Services	yes		yes
SR	Retirement Housing	yes		yes
SR	Skilled Nursing Care	yes		yes
ER	Emergency Services	yes		
ER	Urgent Care Center			
ER	Ambulance Services			yes
SERV	Alcoholism-Drug Abuse			
SERV	Blood Donor Center			yes
SERV	Chiropractic Services			yes
SERV	Complementary Medicine Services			
SERV	Dental Services			yes
SERV	Fitness Center	yes		yes
SERV	Health Education Classes	yes	yes	
SERV	Health Fair (Annual)	yes		yes
SERV	Health Information Center			
SERV	Health Screenings	yes	yes	
SERV	Meals on Wheels	yes		yes
SERV	Nutrition Programs	yes		
SERV	Patient Education Center	yes		
SERV	Support Groups	yes		yes
SERV	Teen Outreach Services			
SERV	Tobacco Treatment/Cessation Program			
SERV	Transportation to Health Facilities	yes		yes
SERV	Wellness Program	yes		

Updated 1/19/2016

CHCS ACTIVE AND CONSULTING PROVIDERS

	PROVIDER'S NAME	STAFF CATEGORY	AREA OF PRACTICE
1	David Allen, MD	Active	Family Practice
2	Nicholas W. Cahoj, MD	Active	Family Practice
3	C. Bruce Carroll, MD	Active	Family Practice
4	Melissa Goulart, DO	Active	Family Practice
5	Dagoberto Heredia, MD	Active	Psychiatry
6	John M. Kelley, MD	Active	Family Practice
7	John Meriwether, MD	Active	Family Practice
8	Thomas E. Walsh, MD	Active	Family Practice
9	Marcus Weiser, DO	Active	Family Practice
10	Chance Williams, MD	Active	Family Practice
11	Andrew Wong, MD	Active	Family Practice
12	Nancy J. Zidek, MD	Active	Family Practice
13	Nancy Bosse, APRN-C	Allied Health	Family Practice
14	Jeremy Brandt, PA-C	Allied Health	Family Practice
15	Douglas Brehm, APRN-C	Allied Health	Cardiology
16	Cornelia Campbell, APRN-C	Allied Health	Family Practice
17	Brent Cummins, CRNA	Allied Health	Anesthesia
18	Kay Cummins, APRN-C	Allied Health	Family Practice
19	Kenton Erb, PA-C	Allied Health	Orthopedics
20	Timothy Gateley, DPM	Allied Health	Podiatry
21	Regina Gronewoller, LCMSW	Allied Health	Counseling
22	Lori Harris, CRNA	Allied Health	Anesthesia
23	Kenneth Hobbs, DPM	Allied Health	Podiatry
24	Julia Ingwerson, APRN-C	Allied Health	Family Practice
25	Amy Jones, APRN	Allied Health	Family Practice
26	Rita Kennedy, APRN	Allied Health	Cardiology
27	Jana Kramer, PA-C	Allied Health	Family Practice
28	Rebecca Kramer, CRNA	Allied Health	Anesthesia
29	Scott McCormick, CRNA	Allied Health	Anesthesia
30	Donald Nebelung, PA-C	Allied Health	Family Practice
31	Heather Myers, APRN-C	Allied Health	Family Practice
32	Michele Reisinger, APRN-C	Allied Health	Family Practice
33	Debra Rezac, APRN-C	Allied Health	Family Practice
34	Sheila Talley, PA-C	Allied Health	Family Practice
35	Kevin Bernd, DO	Consulting	Cardiology
36	Bernita M. Berntsen, MD	Consulting	Surgery
37	Paramjit Bhatia, MD	Consulting	Pathology
38	J. Patrick Birkbeck, MD	Consulting	Cardiology
39	Chen Hoe Chow, MD	Consulting	Cardiology
40	John Devine, MD	Consulting	Urology
41	Thomas J. Doyle, MD	Consulting	Cardiology
42	Carlyle Dunshee, MD	Consulting	Surgery
43	Matthew Gish, MD	Consulting	Radiology
44	Richard R. Gomez, MD	Consulting	Pathology
45	Tyler Grindal, MD	Consulting	ENT

46	Suelyn Hall, MD	Consulting	Urology
47	James J. Hamilton, MD	Consulting	Surgery
48	Sidney Hu, MD	Consulting	Surgery
49	Alfredo Iloreta, MD	Consulting	Urology
50	Kelly Ivester, MD	Consulting	Radiology
51	John Joliff, MD	Consulting	Cardiology
52	Jack A. Jones, MD	Consulting	Cardiology
53	Gilbert Katz, MD	Consulting	Cardiology
54	William Leeds, DO	Consulting	Pulmonology
55	Jeffrey Leichter, MD	Consulting	Radiology
56	Shawn Magee, MD	Consulting	Pulmonology
57	Jennifer McAllaster, MD	Consulting	Surgery
58	James R. McAtee, MD	Consulting	Orthopedics
59	Michael T. McCoy, MD	Consulting	Orthopedics
60	Sheila P. McMeekin, MD	Consulting	Pathology
61	O. Warren Meyer, MD	Consulting	Cardiology
62	Curtis Mick, MD	Consulting	Radiology
63	Mark L. Pudwill, MD	Consulting	Pathology
64	Seshu C. Rao, MD	Consulting	Cardiology
65	Dan Reimer, MD	Consulting	Family Practice
66	William P. Schaetzel, DO	Consulting	Pathology
67	Alap Shah, MD	Consulting	Cardiology
68	Mike Sheffield, MD	Consulting	Radiology
69	Dhiraj Singh, MD	Consulting	Cardiology
70	Mark S. Synovec, MD	Consulting	Pathology
71	Nathan Thompson, DO	Consulting	Pathology
72	Todd Trobough, MD	Consulting	OB/GYN
73	Sushmita Velloor, MD	Consulting	Rehabilitation
74	Gregory J. Welle, MD	Consulting	Radiology
75	Linda Wells, MD	Consulting	Pathology
76	Brian F. Wilson, MD	Consulting	Orthopedics
77	Lambert Wu, MD	Consulting	Cardiology

As of 2/22/2016

General Online Healthcare Resources

Doctors and Dentists--General

- [AMA Physician Select: Online Doctor Finder](#) (American Medical Association)
- [DocInfo](#) (Federation of State Medical Boards of the United States)
- [Find a Dentist](#) (Academy of General Dentistry)
- [Medicare: Physician Compare](#) (Centers for Medicare & Medicaid Services)

Hospitals and Clinics--General

- [Compare Hospitals](#) (Leapfrog Group)
- [Find a Doctor](#) (TRICARE Management Activity)
- [HRSA: Find a Health Center](#) (Health Resources and Services Administration)

Doctors and Dentists--Specialists

- [American Osteopathic Association D.O. Database](#) (American Osteopathic Association)
- [ASGE: Find a Doctor](#) (American Society for Gastrointestinal Endoscopy)
- [Cancer Genetics Services Directory](#) (National Cancer Institute)
- [Expert Locator: Immunologists](#) (Jeffrey Modell Foundation)
- [Find a Cancer Doctor](#) (American Society of Clinical Oncology)
- [Find a Dermatologic Surgeon](#) (American Society for Dermatologic Surgery)
- [Find a Dermatologist](#) (American Academy of Dermatology)
- [Find a Doctor](#) (Dystonia Medical Research Foundation)
- [Find a Gastroenterologist](#) (American College of Gastroenterology)
- [Find a Hand Surgeon](#) (American Society for Surgery of the Hand)
- [Find a Heart Rhythm Specialist](#) (Heart Rhythm Society)
- [Find a Hematologist](#) (American Society of Hematology)
- [Find a Neurologist](#) (American Academy of Neurology)
- [Find a Pediatric Dentist](#) (American Academy of Pediatric Dentistry)
- [Find a Pediatrician or Pediatric Specialist](#) (American Academy of Pediatrics)
- [Find a Periodontist](#) (American Academy of Periodontology)
- [Find a Physical Medicine & Rehabilitation Physician](#) (American Academy of Physical Medicine and Rehabilitation)
- [Find a Podiatrist](#) (American Podiatric Medical Association)
- [Find a Rheumatologist](#) (American College of Rheumatology)
- [Find a Surgeon](#) (American Association of Oral and Maxillofacial Surgeons)
- [Find a Urologist](#) (Urology Care Foundation)
- [Find an ACFAS Physician](#) (American College of Foot and Ankle Surgeons)
- [Find an Allergist/Immunologist](#) (American Academy of Allergy, Asthma, and Immunology)
- [Find an Endocrinologist](#) (Hormone Health Network)
- [Find an Endocrinology - Thyroid Specialist](#) (American Thyroid Association)
- [Find an ENT](#) (American Academy of Otolaryngology--Head and Neck Surgery)
- [Find an Eye M.D.](#) (American Academy of Ophthalmology)
- [Find an Interventional Radiologist](#) (Society of Interventional Radiology)
- [Find an Ob-Gyn](#) (American College of Obstetricians and Gynecologists)
- [Find an Orthopaedic Foot and Ankle MD/DO](#) (American Orthopaedic Foot and Ankle Society)
- [Finding an Eye Care Professional](#) (National Eye Institute)
- [GI Locator Service](#) (American Gastroenterological Association)
- [Searching for Surgeons](#) (American College of Surgeons)

Other Healthcare Providers

- [Cancer Genetics Services Directory](#) (National Cancer Institute)

- [Find a Diabetes Educator](#) (American Association of Diabetes Educators)
- [Find a Massage Therapist](#) (American Massage Therapy Association)
- [Find a Midwife](#) (American College of Nurse-Midwives)
- [Find a NCCAOM Certified Practitioner](#) (National Certification Commission for Acupuncture and Oriental Medicine)
- [Find a Nurse Practitioner](#) (American Academy of Nurse Practitioners)
- [Find a Physical Therapist](#) (American Physical Therapy Association)
- [Find a Psychologist](#) (National Register of Health Service Providers in Psychology)
- [Find a Registered Dietitian Nutritionist](#) (Academy of Nutrition and Dietetics)
- [Find a Therapist](#) (Anxiety and Depression Association of America)
- [Find an Audiologist](#) (American Academy of Audiology)
- [Search for an Emergency Contraception Provider in the United States](#) (Princeton University, Office of Population Research)

Hospitals and Clinics--Specialized

- [Accredited Birth Centers](#) (Commission for the Accreditation of Birth Centers)
- [ALS Research and Clinical Centers](#) (Muscular Dystrophy Association)
- [Alzheimer's Disease Research Centers](#) (National Institute on Aging)
- [Cystic Fibrosis Foundation: Find a Chapter](#) (Cystic Fibrosis Foundation)
- [FDA Certified Mammography Facilities](#) (Food and Drug Administration)
- [Find a Cystic Fibrosis Care Center](#) (Cystic Fibrosis Foundation)
- [Find a Dialysis Facility](#) (Centers for Medicare & Medicaid Services)
- [Find a Free Clinic](#) (National Association of Free and Charitable Clinics)
- [Find a Sleep Center Near You](#) (American Academy of Sleep Medicine)
- [Finding Treatment Centers](#) (American Cancer Society)
- [Indian Health Service: Find Health Care](#) (Indian Health Service)
- [Mental Health Treatment Program Locator](#) (Substance Abuse and Mental Health Services Administration)
- [NCI Designated Cancer Centers](#) (National Cancer Institute)
- [Neurofibromatosis Specialists](#) (Children's Tumor Foundation)
- [Post-Polio Directory 2014: Post-Polio Clinics, Health Professionals, Support Groups](#) (Post-Polio Health International including International Ventilator Users Network)
- [Sickle Cell Clinics, Contacts, and Resources](#) (Georgia Comprehensive Sickle Cell Center at Grady Health System)
- [Spina Bifida Clinic Directory](#) (Spina Bifida Association of America)
- [Substance Abuse Treatment Facility Locator](#) (Substance Abuse and Mental Health Services Administration)
- [Transplant Center Directory](#) (National Marrow Donor Program)
- [Transplant Center Search Form](#) (BMT InfoNet)
- [VA Health Care Facilities Locator](#) (Veterans Health Administration)
- [Where to Donate Blood](#) (AABB)
- [Where to Donate Cord Blood--Participating Hospitals](#) (National Marrow Donor Program)

Other Healthcare Facilities and Services

- [American College of Radiology Accredited Facility Search](#) (American College of Radiology)
- [APA District Branch / State Association Directory](#) (American Psychiatric Association)
- [Directory of Organizations \(Deafness and Communication Disorders\)](#) (National Institute on Deafness and Other Communication Disorders)
- [Dog Guide Training: AFB Directory of Services Listings](#) (American Foundation for the Blind)
- [Eldercare Locator](#) (Department of Health and Human Services)
- [Find a Hospice or Palliative Care Provider](#) (National Hospice and Palliative Care Organization)
- [Find a Nursing Home](#) (Centers for Medicare & Medicaid Services)
- [Find an Asthma Camp](#) (Consortium on Children's Asthma Camps)
- [Find Services for People Who Are Blind or Visually Impaired](#) (American Foundation for the Blind)
- [Getting Help](#) (National Institute on Alcohol Abuse and Alcoholism)
- [Home Health Compare: Find a Home Health Agency](#) (Centers for Medicare & Medicaid Services)
- [Medicare: Helpful Contacts](#) (Centers for Medicare & Medicaid Services)

- [Muscular Dystrophy Association Programs and Services](#) (Muscular Dystrophy Association)
- [National Foster Care and Adoption Directory Search](#) (Children's Bureau)
- [National Rehabilitation Information Center](#) (National Institute on Disability and Rehabilitation Research)
- [Organizations That Offer Support Services](#) (National Cancer Institute)
- [Poison Control Centers](#) (American Association of Poison Control Centers)
- [Resources and Information for Parents about Braille](#) (American Foundation for the Blind)
- [Tourette Association Chapters, Support Groups, and Centers of Excellence](#) (Tourette Association of America)
- [Violence against Women: Resources by State](#) (Department of Health and Human Services, Office on Women's Health)

Updated 2/1/2016

SOURCE: MedlinePlus provides links to directories to help you find libraries, health professionals, services and facilities. NLM does not endorse or recommend the organizations that produce these directories, nor the individuals or organizations that are included in the directories.

Pottawatomie County Area Health Services

Emergency Numbers

Police/Sheriff 911

Fire 911

Ambulance 911

Non-Emergency Numbers

Pottawatomie County Sheriff 785-457-3353
Pottawatomie County Ambulance 785-456-9700

Municipal Non-Emergency Numbers

	<u>Police/Sheriff</u>	<u>Fire</u>
Havensville	785-457-3353	
Louisville	785-456-1911	
Manhattan	785-776-3182	
Onaga	785-457-3353	
St. George	785-494-8413	785-456-8553
St. Mary's	785-437-2311	
Wamego	785-456-9553	785-456-1911
Westmoreland	785-457-3353	785-457-3866

To provide updated information or to add new health and medical services to this directory, please contact:

Office of Local Government

K-State Research and
Extension
10E Umberger
Manhattan, KS
66506

Phone: (785)-532-2643

Fax: (785)-532-3093

Other Emergency Numbers

Kansas Child/Adult Abuse and Neglect Hotline

1-800-922-5330

www.srskansas.org/hotlines.html

Domestic Violence Hotline

1-800-799-7233

www.ndvh.org

Emergency Management (Topeka)

785-274-1409

www.accesskansas.org/kdem

Federal Bureau of Investigation

1-866-483-5137

www.fbi.gov/congress/congress01/caruso100301.htm

Kansas Arson/Crime Hotline

1-800-KS-CRIME

800-572-1763

www.accesskansas.org/kbi

Kansas Bureau of Investigation (Topeka)

785-296-8200

www.accesskansas.org/kbi

Kansas Crisis Hotline (Domestic Violence/Sexual Assault)

1-888-END-ABUSE

www.kcsdv.org

Kansas Road Conditions

1-866-511-KDOT

511

www.ksdot.org

Poison Control Center

1-800-222-1222

www.aapcc.org

Suicide Prevention Hotline

1-800-SUICIDE

www.hopeline.com

1-800-273-TALK

www.suicidepreventionlifeline.com

Toxic Chemical and Oil Spills

1-800-424-8802

www.epa.gov/region02/contact.htm

Health Services

Hospitals

Community Hospital St. Marys

a division of
Community HealthCare System Inc.
206 S Grand Avenue (St. Marys)
783-437-3734
www.chcsks.org

Community Hospital St. Marys services include:

Acute care
Audiology
Behavioral Health
Diagnostic Imaging
Ear, Nose, Throat
Family practice clinic
Full service emergency room
Home Care
Laboratory
Long-term care Nutrition
Services Pediatric/Youth
Services Podiatry
Rehabilitative Services (PT,OT, Speech)
Surgical Services
Swing Bed (Skilled Care Program)
Women's Health

Community Hospital Onaga

a division of
Community HealthCare System Inc.
120 W 8th Street (Onaga)
785-889-4272
www.chcsks.org

Community Hospital Onaga services include:

Audiology
Behavioral health care
Cardiology
Childbirth
Diabetic care
Diagnostic imaging Ear,
Nose, & Throat
Emergency department
Family practice
Home care
Laboratory
LifeCare Fitness Center
Nutrition services
Podiatry
Rehabilitation services
Senior care (Assisted Living Facility)
Surgery
Swing Bed (Skilled Care Program)
Women's health
Wound care
Youth services

Wamego City Hospital

711 Genn Drive (Wamego)
785-456-2295
www.wamegocityhospital.com

Wamego City Hospital services include:

Heritage Program for Seniors Laboratory
Occupational Therapy
Outpatient Specialty Clinic
Physical Therapy Radiology
Speech Therapy
Surgical Services
Swing Bed Program
Wamego Family Health Care

Health Department

Pottawatomie County Health Department

320 Main Street, P.O. Box 310
(Westmoreland)
785-457-3396

Pottawatomie County Health Department services include:

Communicable Disease Prevention
Day Care Licensing Family
Planning Services Healthy Start
Home Visits Health Hazards
Investigation HIV Testing
Immunizations for Adults and Children
Maternal & Infant Services
Tobacco Prevention
Toenail Clinic
Well Child Physicals

Mental Health

Heritage Program for Senior Adults

Wamego City Hospital

711 Genn Drive (Wamego)
785-456-2295
www.wamegocityhospital.com

Medical Professionals

Chiropractors

Alternative Health Care (St. Marys)
513 W Bertrand Avenue (St. Marys)
785-321-1700
www.alternativehealthcare.net

Alternative Health Care Center (Wamego)
1511 W US Highway 24 (Wamego)
785-456-2046
www.alternativehealthcare.net

Botz, Thomas E. D.C.
445 E Poyntz Avenue (Manhattan)
785-776-1600
www.botzchiro.net

Dillinger Chiropractic Clinic
426 Lincoln Street (Wamego)
785-456-7167

Fox Chiropractic Clinic
1004 Lincoln Street (Wamego)
785-456-8657

Health Source of Manhattan
930 Hayes Drive, Suite C (Manhattan)
785-587-8989
www.paquettechiropractic.com

Clinics

Onaga Clinic
a division of
Community HealthCare System
114 W 8th Street (Onaga)
785-889-4241

Community Health Ministry
903 6th Street (Wamego)
785-456-7872
www.wamegocommunityhealthministry.org

Westmoreland Family Health Clinic
a division Community Healthcare System
304 Main Street (Westmoreland)
785-457-9890

St. Marys Clinic

a division of
Community Healthcare System
206 S Grand Avenue (St. Marys)
785-437-3407

Cotton O'Neil Clinic-Wamego
1704 Commercial Circle (Wamego)
785-456-2207
www.stormontvail.org

K + Stat Urgent Care
930 Hayes Drive, Suite B (Manhattan)
785-565-0016

St. Marys Clinic
a division of
Community HealthCare System
206 Grand Ave. (St. Marys)
785-437-3734

St. Marys Family Practice PA
532 W Bertrand Avenue (St. Mary's)
785-437-2771
www.drdjones.nutrametrix.com

Wamego Family Health Center
711 Genn
785-456- 6288

Dentists

Bates, Steven R. D.D.S.
503 Elm Street, Suite 1 (Wamego)
785-456-2330

McQuillen, John D. D.D.S.
904 5th Street (Wamego)
785-456-9393
www.wamegodentist.com

St. Marys Dental Center
Jay W Hildreth, DDS
310 W Bertrand Avenue (St. Mary's)
785-437-2771
www.stmarysdentalcenter.com

Wamego Dental Center PA
1519 US Highway 24 (Wamego)
785-456-2330

Community Health Ministry – Dental
Clinic
903 6th St Wamego
785-456-7872

Optometrists

Alex's Affordable Eyewear
800 Tuttle Creek Boulevard, Suite C
(Manhattan)
785-565-9009
www.alexsaaffordableeyewear.com

Vision Source
930 Hayes Drive (Manhattan)
785-539-2020

Claussen & Kueker Optometrists
115 W 3rd Street (Onaga)
785-889-4387
www.familyeyecenter.net

Family Eye Center of Wamego
631 Lincoln Avenue (Wamego)
785-456-2236
www.familyeyecenter.net

McPeak, Gail H. O.D.
414 Lincoln Avenue, Suite A (Wamego)
785-456-2247

Optical Perspectives
930 Hayes Drive, Suite 9 (Manhattan)
785-539-5105

Verne Claussen O.D.
525 W Bertrand Avenue (St. Mary's)
785-437-2978

Vision Source
1405 W US Highway 24 (Wamego)
785-456-8900
www.optometristswamegokansas.com

Vision Source-Optical Perspectives
400 McCall Road (Manhattan)
785-539-5105

Walmart
101 Bluemont Avenue (Manhattan)
785-776-4897
www.walmart.com

Pharmacies

Hoffman Pharmacy
402 Main Street (Westmoreland)
785-457-3611

The Medicine Shoppe
461 E Poyntz Avenue (Manhattan)
785-539-1717
www.medicineshoppe.com

Onaga Pharmacy
300 Leonard Street (Onaga)
785-889-7181

St. Marys Pharmacy
520 W Bertrand (St. Mary's)
785-437-2967

Wamego Drug Store
501 Lincoln Street (Wamego)
785-456-9292

Physicians and Health Care Providers

Cotton O'Neil Clinic-Wamego
1704 Commercial Circle (Wamego)
785-456-2207
www.stormontvail.org
Jeffrey B. Atwood M.D.
Bradley Cutting MD
Cassie Scriptor MD

James Gregory Vretis D.O.
31181 Highway K18 (Wamego)
785-458-2751

K + Stat Urgent Care
930 Hayes Drive, Suite B (Manhattan)
785-565-0016

Onaga Clinic
a division of
Community HealthCare System
114 W 8th (Onaga)
785-889-4241
Tom Walsh, MD
Marcus Weiser, DO
Nancy Zidek, MD
Nancy Bosse, ARNP
Michele Reisinger, ARNP
Debra Rezac, ARNP

St. Marys Clinic
a division of
Community HealthCare System
206 Grand Ave. (St. Marys)
785-437-3734
Carl Bruce Carroll, MD
Melissa Goulart, DO
John Kelley, MD
Chance Williams, MD
Julia Ingwerson, ARNP

St. Marys Family Practice PA
532 W Bertrand Avenue (St. Mary's)
785-437-2771
David B. Jones M.D.

Wamego City Hospital
711 Genn Drive (Wamego)
785-456-2295
www.wamegocityhospital.com
Roland M. Darey Jr. M.D. Kathy
A. Douglas ARNP-BC Curtis
Wolfe, MD

Westmoreland Family Health Clinic
a division of
Community HealthCare System
304 Main Street (Westmoreland)
785-457-9890
John Kelley, MD
Chance Williams, MD
Nancy Bosse, ARNP

Community Health Ministry –Medical
Clinic
903 6th St Wamego
785-456-7872

Rehabilitation Services

Community Rehab Services
a division of
Community HealthCare System
120 W 8th Street (Onaga)
800-232-8579

Community Rehab Services
a division of
Community HealthCare System
206 S Grand Avenue (St. Marys)
785-437-3768

**Heartland Physical Therapy &
Rehabilitation**
1411 W US Highway 24 (Wamego)
785-456-8899
www.heartlandphysicaltherapy.com

Kaw Valley Physical Therapy
907 E Jesuit Lane (St. Marys)
785-437-2663

Key Rehabilitation
105 E Park Avenue (St. Marys)
785-437-2007

**Maximum Performance Physical
Therapy Fitness**

426 A McCall Road (Manhattan)
785-776-0670
www.maximumperformanceonline.net

**Wamego City Hospital, Physical
Therapy Department**
711 Genn Drive (Wamego)
785-456-7211

Other Health Care Services

Assisted Living/Nursing Homes/TLC

Golden Acres Nursing Center
500 Western Street (Onaga)
785-889-4227

**Good Samaritan Society-Valley
Vista**
2011 Grandview Drive (Wamego)
785-456-9482

Grandview Suites
2103 Grandview Drive (Wamego)
785-456-6692

Redbud Plaza Assisted Living
a division of Community
HealthCare System
205 W 9th Street (Onaga)
785-889-4142

St. Marys Manor
a division of
Community HealthCare System
206 Grand Avenue (St. Marys)
785-437-2286

Vintage Park at Wamego
1607 4th Street (Wamego)
785-456-8997
www.vintageparkwamego.com

Westy Community Care Home, Inc.
105 N Highway 99 (Westmoreland)
785-457-2801

Diabetes

Arriva Medical
1-800-375-5137

Community HomeHealth
a division of
Community HealthCare System
100 W 8th Street (Onaga)
785-889-7200

Diabetes Care Club
1-888-395-6009

Community Hospital Onaga
a division of
Community HealthCare System
120 W 8th Street (Onaga)
785-889-4272
www.chccks.org

Community Hospital St. Marys
a division of
Community HealthCare System
206 S Grand Avenue (St. Marys)
783-437-3734
www.chccks.org

Wamego City Hospital
711 Genn Drive (Wamego)
785-456-2295
www.wamegocityhospital.com

785-539-7935

Pawnee Mental Health Services
1558 Hayes Drive (Manhattan)
785-587-4315
www.pawnee.org

Sexual Assault/Domestic Violence Center (Hutchinson)
Hotline: 1-800-701-3630
Business Line: 620-663-2522

Educational Training Opportunities

Association of Continuing Education
620-792-3218

Family Life Education Center, Inc.
6120 N Highway 99 (Wamego)
785-456-9001

21st Century ED Opportunity CT
420 Lincoln Street (Wamego)
785-456-6276

Disability Services

American Disability Group
1-877-790-8899

Big Lakes Developmental Center, Inc.
1416 Hayes Drive (Manhattan)
785-776-9201
www.biglakes.org

Kansas Department on Aging
1-800-432-3535
www.agingkansas.org/index.htm

Domestic/Family Violence

Child/Adult Abuse Hotline
1-800-922-5330
www.srskansas.org/services/child_protective_services.htm

General Information – Women’s Shelters
www.WomenShelters.org

Kansas Crisis Hotline
Manhattan

Food Programs

Kansas Food 4 Life
4 NW25th Road (Great Bend)
620-793-7100

Kansas Food Bank
1919 E Douglas (Wichita)
316-265-4421
www.kansasfoodbank.org

Community Health Ministry – Food
903 6th St Wamego
785-456-7872

Harvestor Truck – monthly to communities

Government Healthcare

Kansas Department on Aging (KDOA)
503 South Kansas Avenue (Topeka)
785-296-4986 or 1-800-432-3535
www.agingkansas.org/

Kansas Department of Health and Environment (KDHE)
Curtis State Office Building

1000 South West Jackson (Topeka)
785-296-1500
www.kdheks.gov/contact.html

MEDICAID

Bureau of Family Services
2709 Amherst Ave
Manhattan KS
785-776-4011

Health and Fitness Centers

Balderson Fitness Center

400 Work Tool Road (Wamego)
785-456-9559

Bodies in Motion Fitness & Dance

17680 Old Post Road (Wamego)
785-456-9177

Curves

8819 E US Highway 24 (Manhattan)
785-587-8080
www.curves.com

Maximum Performance Physical Therapy & Fitness

426 McCall Road (Manhattan)
785-776-0670
www.maximumperformanceonline.net

LifeCare Fitness Center

a division of
Community HealthCare System
120 W 8th Street (Onaga)
785-889-4256

Onaga Weightlifting Club, Inc.

319 E 4th Street (Onaga)
785-889-4363

Wamego Athletic Club

1409 W US Highway 24 (Wamego)
785-456-2992

Wamego City Hospital

711 Genn Drive (Wamego)
785-456-2295

Home Health

Community HomeHealth

a division of
Community HealthCare System
100 W 8th Street (Onaga)
785-889-7200

PRN Home Health & Hospice

1010 Lincoln Street (Wamego)
785-456-7764
www.prnhomehealthhospice.com

Community HomeHealth

a division of Community
HealthCare System
206 Grand Ave. (St. Marys)
785-437-3768

Hospice

PRN Home Health & Hospice

1010 Lincoln Street (Wamego)
785-456-7764
www.prnhomehealthhospice.com

Massage Therapy

Body Works-Massage Therapy

905 5th Street (Wamego)
785-456-9954
www.bodyworksmassagetherapywamego.com

Botz, Thomas E. D.C.

445 E Poyntz Avenue (Manhattan)
785-776-1600
www.botzchiro.net

Dillinger Chiropractic Clinic

426 Lincoln Street (Wamego)
785-456-7167

Essentials

312 Tuttle Creek Boulevard, Suite B
(Manhattan)
785-776-6066
www.salonessentials.biz

Head First Salon

505 Elm Street, Suite B (Wamego)
785-456-1322

Maximum Performance Physical Therapy & Fitness

426 McCall Road (Manhattan)
785-776-0670
www.maximumperformanceonline.net

Rock On Massage

720 High Street (Onaga)

785-889-4837
www.inyanretreat.com

Trisha's Studio 24
8837 E US Highway 24 (Manhattan)
785-537-2726

Tsubo Solutions Massage Therapy
314 Tuttle Creek Boulevard, Suite F
(Manhattan)
785-539-1325
www.tsubosolutions.com

Medical Equipment and Supplies

American Medical Sales and Repair
1-866-637-6803

Breathe Easy Respiratory Services
1700 Hayes Drive (Manhattan)
785-537-3373

Hoffman Pharmacy
403 Main Street (Westmoreland)
785-457-3611

The Medicine Shoppe
461 E Poyntz Avenue (Manhattan)
785-539-1717
www.medicineshoppe.com

Starr Medical Supply
303 Lincoln (Wamego)
785-456-7827
www.kansasmedicalsupply.com

St. Marys Pharmacy
520 W Bertrand (St. Marys)
785-437-2967

Community HomeCare Equipment
a division of
Community HealthCare System
120 West 8th Street (Onaga)
785-889-4272 ext. 1152
206 Grand Avenue (St. Marys)
785-437-3407

School Nurses

USD 320 Wamego
510 E Highway 24 (Wamego)
785-456-7643

Central Elementary
785-456-7271
West Elementary
785-456-8333
Wamego Middle School
785-456-7682
Wamego High School
785-456-2214

USD 321 Kaw Valley
411 W Lasley (St. Mary's)
785-437-2254
St. Mary's Grade School
785-437-6159
St. Mary's Jr./Sr. High School
785-437-6257

USD 322 Onaga
500 High Street, P.O. Box 60 (Onaga)
785-889-4614
Onaga Grade School
785-889-7101
Onaga High School
785-889-4251

USD 323 Rock Creek
201 S 3rd Street, P.O. Box 70
(Westmoreland)
785-457-3732
Westmoreland Elementary
785-457-3462
St. George Elementary
785-494-2482
Rock Creek Jr./Sr. High School
785-457-3688

USD 384 Blue Valley
3 Ram Way, P.O. Box 98 (Randolph)
785-293-5256
Olsburg Elementary
785-468-3551
Randolph Middle School
785-293-5253
Blue Valley High School
785-293-5255

Senior Services

Homestead Senior Residences
1008 Kaw Valley Park Circle (Wamego)
785-456-2260

Onaga Senior Center
200 Bypass Road (Onaga)
785-889-4402

RedBud Plaza Assisted Living Facility

a division of
Community HealthCare System
205 W. 9th Street (Onaga)
785-889-4142

St. Marys Senior Center

403 W Lasley Street (St. Marys)
785-321-1225

Wamego Senior Center
501 Ash Wamego
785-456-

L&L Assessment & Counseling

5245 N Highway 99 (Wamego)
785-456-2778

Pawnee Mental Health Services

1558 Hayes Drive (Manhattan)
785-587-4315
www.pawnee.org

Road Less Traveled

1-866-486-1812

Seabrook House

1-800-579-0377

The Treatment Center

1-888-433-9869

Local Government, Community, and Social Services

Adult Protection

Adult Protective Services (SRS)

1-800-922-5330
www.srskansas.org/ISD/ees/adult.htm

Elder Abuse Hotline

1-800-842-0078
www.elderabusecenter.org

Kansas Department of Social and Rehabilitation Services West Region Protection Reporting Center
1-800-922-5330

Child Protection

Big Lakes Developmental Center, Inc.

1416 Hayes Drive (Manhattan)
785-776-9201
www.biglakes.org

Kansas Department of Social and Rehabilitation Services West Region Protection Reporting Center – i.e. PROTECTION REPORT CENTER FOR ABUSE
1-800-922-5330
Available 24 hours/7 days per week – including holidays

Alcohol and Drug Treatment

Alcohol A 24-Hour Able Helpline & Addiction Treatment
1-800-505-0964

Alcohol and Drug Abuse Services
1-800-586-3690
http://www.srskansas.org/services/alc-drug_assess.htm

Alcohol Detoxification 24-Hour Helpline
1-877-403-3387
www.ACenterForRecovery.com

Center for Recovery
1-877-403-6236

G&G Addiction Treatment Center
1-866-439-1807

Children and Youth

Children's Alliance
627 SW Topeka Boulevard (Topeka)
785-235-5437
www.childdaily.org

Kansas Children's Service League
1-800-332-6378
www.kcsl.org

Community Centers

Havensville Community Center
901 Commercial Street (Havensville)
785-948-2200

The Olsburg Library
318 2nd Street (Olsburg)
785-468-3347

Onaga City Public Library

313 Leonard Street (Onaga)
785-889-4531

Onaga Community Center

100 Union Pacific Drive (Onaga)
785-889-7164

Pottawatomie/Wabaunsee Regional Library

306 N 5th Street (St. Mary's)
785-437-2778
315 Main Street (Westmoreland)
785-457-2841

Pennyland Park

Walnut Street & 8th Street (Wamego)

Railroad Park

4th Street & Lincoln Street (Wamego)

Riverfront Park

Valley Street & Lincoln Street (Wamego)

St. Marys Senior Center

403 W Lasley Street (St. Marys)
785-321-1225

Wamego City Park

4th Street & Ash Street (Wamego)

Wamego Recreation Complex

US Highway 24 & Balderson Boulevard
(Wamego)

Wamego Public Library

431 Lincoln Street (Wamego)
785-456-9181
www.wamegopubliclibrary.com

Westmoreland City/Legion Park

200 Main Street (Westmoreland)

Westmoreland City Pool

613 E Campbell Street (Westmoreland)
785-457-3361

Westmoreland City Public Library**Crime Prevention****Crime Stoppers**

1001 S Seth Child Road (Manhattan)
785-539-7777

Day Care Providers – Adult**Advocare Home Specialty Care**

1004 Lincoln Street (Wamego)
785-456-8910
www.advocarehomecare.com

Golden Acres Nursing Center

500 Western Street (Onaga)
785-889-4227

Good Samaritan Society-Valley Vista

2011 Grandview Drive (Wamego)
785-456-9482

Grandview Suites

2103 Grandview Drive (Wamego)
785-456-6692

PRN Home Health & Hospice

1010 Lincoln Street (Wamego)
785-456-7764
www.prnhomehealthhospice.com

Redbud Plaza

a division of Community
HealthCare System
205 W 9th Street (Onaga)
785-889-4142

St. Marys Manor

a division of Community
HealthCare System
206 Grand Ave. (St. Marys)
785-437-2286

Vintage Park at Wamego

1607 4th Street (Wamego)
785-456-8997
www.vintageparkwamego.com

Westy Community Care Home, Inc.

105 N Highway 99 (Westmoreland)
785-457-2801

NEK-CAP Early Head Start

714 Plum Street (Wamego)
785-456-6703
www.nekcap.org

NEK-CAP Onaga Head Start

817 Leonard Street (Onaga)
785-889-4722
www.nekcap.org

Pottawatomie/Wabaunsee Infant Toddler Program

1911 6th Street (Wamego)
785-456-7366

Extension Office

Pottawatomie County Extension Office

612 Campbell, P.O. Box 612
(Westmoreland)
785-457-3319

Funeral Homes

Campanella Evans Mortuary

612 W US Highway 24 (Wamego)
785-456-9811
www.campanellafuneral.com

Chapel Oaks Funeral Home

218 Leonard Street (Onaga)
785-889-7171
www.chapeloaksfuneralhome.com

Kufahl Funeral Home

307 Center Road (Wheaton)
785-396-4454
www.campanellafuneral.com

Piper Funeral Home

714 W Maple Street (St. Mary's)
785-437-2222
www.piperfuneralhome.com

Stewart Funeral Home

905 5th Street (Wamego)
785-456-2233
www.stewartfuneralhomes.com

Head Start

NEK-CAP Early Head Start

714 Plum Street (Wamego)
785-456-6703
www.nekcap.org

NEK-CAP Onaga Head Start

817 Leonard Street (Onaga)
785-889-4722
www.nekcap.org

Housing

Onaga Housing Authority

840 Clifton Street (Onaga)
785-889-4616

St. Mary's Housing Authority

607 Elm Street (St. Mary's)
785-437-6678

Wamego Housing Authority

1201 Chrysler Drive (Wamego)
785-456-7675

Westmoreland Housing Authority

605 E State Street (Westmoreland)
785-457-3489

Legal Services

Etzel, Chris Attorney At Law

307 Leonard Street (Onaga)
785-889-4192

Lang, John E.

405 Lincoln Street (Wamego)
785-456-9826

Lange, Ben Law Office

503 Elm Street (Wamego)
785-456-6740

Morrison Frost Olsen & Irvine LLP

602 W Bertrand Avenue (St. Mary's)
785-437-2392
www.mfoilaw.com

Olsen, Vivien Attorney At Law

117 S 6th Street (St. Mary's)
785-437-2777

Paulsen, Deborah

212 Leonard Street (Onaga)
785-889-4660

Pugh, Jacob R. Attorney Office

625 Lincoln Street (Wamego)
785-456-9377
www.pughlaw.net

Rebecca R. Rookstool Attorney At Law

108 N 2nd Street
Westmoreland
785-457-0110

Redler, Robert S. Attorney
511 W Bertrand Avenue (St. Mary's)
785-437-2680

Travis Bail Bonds
5990 Flush Road (St. George)
785-494-2096

Watt, John W.
815 5th Street, Suite B (Wamego)
785-456-2231

Libraries, Parks and Recreation

Havensville Community Center
901 Commercial Street (Havensville)
785-948-2200

The Olsburg Library
318 2nd Street (Olsburg)
785-468-3347

Onaga City Public Library
313 Leonard Street (Onaga)
785-889-4531

Onaga Community Center
100 Union Pacific Drive (Onaga)
785-889-7164

Onaga Swimming Pool
9th Street & High Street (Onaga)

**Pottawatomie/Wabaunsee
Regional Library**
306 N 5th Street (St. Mary's)
785-437-2778

Pennyland Park
Walnut Street & 8th Street (Wamego)

Railroad Park
4th Street & Lincoln Street (Wamego)

Riverfront Park
Valley Street & Lincoln Street (Wamego)

St. Marys Senior Center
403 W Lasley Street (St. Mary's)
785-321-1225

Wamego City Park
4th Street & Ash Street (Wamego)

Wamego Recreation Complex
US Highway 24 & Balderson Boulevard
(Wamego)

Wamego Public Library
431 Lincoln Street (Wamego)
785-456-9181
www.wamegopubliclibrary.com

Westmoreland City/Legion Park
200 Main Street (Westmoreland)

Westmoreland City Pool
613 E Campbell Street (Westmoreland)
785-457-3361

Westmoreland City Public Library
315 Main Street (Westmoreland)
785-457-2841

Pregnancy Services

Adoption is a Choice
1-877-524-5614

Adoption Network
1-888-281-8054

Adoption Spacebook
1-866-881-4376

Graceful Adoptions
1-888-896-7787

Kansas Children's Service League
1-877-530-5275
www.kcsl.org

Public Information

Clerk of Pottawatomie County
207 N 1st Street (Westmoreland)
785-457-3314

Onaga Chamber of Commerce
319 Prospect Street (Onaga)
785-889-4250

Onaga City Hall
319 Prospect Street (Onaga)
785-889-4456

St. Marys Chamber of Commerce
702 W Bertrand (St. Mary's)
785-437-2077

St. Marys City Hall
200 S 7th Street (St. Mary's)
785-437-2311

Wamego Chamber of Commerce
529 Lincoln Street (Wamego)
785-456-7849

Wamego City Hall
430 Lincoln Avenue (Wamego)
785-456-9119

Westmoreland City Hall
202 Main Street (Westmoreland)
785-457-3361

Rape

**Domestic Violence and Rape
Hotline**
1-888-874-1499

Family Crisis Center
1806 12th Street (Great Bend)
620-793-1885

Kansas Crisis Hotline
Manhattan
785-539-7935
1-800-727-2785

Red Cross

American Red Cross
514 Poplar Street (Wamego)
785-456-9773
www.redcross.org

Social Security

Social Security Administration
1-800-772-1213
1-800-325-0778
www.ssa.gov

Transportation

**Pottawatomie County Public
Transportation**
207 N 1st Street, P.O. Box 187
(Westmoreland)
877-728-0433

ATA Bus – St George Area
877-551-6345

State and National Information, Services, Support

Adult Protection

Adult Protection Services
1-800-922-5330
www.srskansas.org/SD/ees/adult.htm

**Domestic Violence and Sexual
Assault (DVACK)**
1-800-874-1499
www.dvack.org

Elder Abuse Hotline
1-800-842-0078
www.elderabusecenter.org

Elder and Nursing Home Abuse Legal
[www.resource4nursinghomeabuse.com/
index.html](http://www.resource4nursinghomeabuse.com/index.html)

**Kansas Coalition Against Sexual and
Domestic Violence**
1-888-END-ABUSE (363-2287)
www.kcsdv.org/ksresources.html

**Kansas Department on Aging
Adult Care Complaint Program**
1-800-842-0078

National Center on Elder Abuse
(Administration on Aging)
[www.ncea.gov/NCEARoot/Main_Site?Fin
d_Help/Help_Hotline.aspx](http://www.ncea.gov/NCEARoot/Main_Site?Find_Help/Help_Hotline.aspx)

National Domestic Violence Hotline
1-800-799-SAFE (799-7233)
1-800-787-3224 (TTY)
www.ndvh.org

National Sexual Assault Hotline
1-800-994-9662
1-888-220-5416 (TTY)
www.4woman.gov/faq/sexualassault.htm

National Suicide Prevention Lifeline
1-800-273-8255

Poison Center
1-800-222-1222

**Sexual Assault and Domestic
Violence Crisis Line**
1-800-701-3630

**Social and Rehabilitation Services
(SRS)**
1-888-369-4777 (HAYS)
www.srskansas.org

Suicide Prevention Helpline
785-841-2345

Alcohol and Drug Treatment Programs

A 1 A Detox Treatment
1-800-757-0771

AAAAAH
1-800-993-3869

Abandon Addiction
1-800-405-4810

Able Detox-Rehab Treatment
1-800-577-2481 (NATIONAL)

Abuse Addiction Agency
1-800-861-1768
www.thewatershed.com

**AIC (Assessment Information
Classes)**
1-888-764-5510

Al-Anon Family Group
1-888-4AL-ANON (425-2666)
www.al-anon.alateen.org

Alcohol and Drug Abuse Hotline
1-800-ALCOHOL

Alcohol and Drug Abuse Services
1-800-586-3690
www.srskansas.org/services/alc-drug_assess.htm

**Alcohol and Drug Addiction
Treatment Programs**
1-800-510-9435

Alcohol and Drug Helpline
1-800-821-4357

**Alcoholism/Drug Addiction
Treatment Center**
1-800-477-3447

**Kansas Alcohol and Drug Abuse
Services Hotline**
1-800-586-3690
www.srskansas.org/services/alc-drug_assess.htm

Mothers Against Drunk Driving
1-800-GET-MADD (438-6233)
www.madd.org

**National Council on Alcoholism and
Drug Dependence, Inc.**
1-800-NCA-CALL (622-2255)
www.ncadd.org

Recovery Connection
www.recoveryconnection.org

Regional Prevention Centers of

Kansas
1-800-757-2180
www.smokyhillfoundation.com/rpc-locate.html

Better Business Bureau

Better Business Bureau
328 Laura (Wichita)
316-263-3146
www.wichita.bbb.org

Children and Youth

Adoption
1-800-862-3678
www.adopt.org/

**Boys and Girls Town National
Hotline**
1-800-448-3000
www.girlsandboystown.org

**Child/Adult Abuse and Neglect
Hotline**
1-800-922-5330
www.srskansas.org/

Child Abuse Hotline
1-800-922-5330

Child Abuse National Hotline
1-800-422-4453
1-800-222-4453 (TDD)
www.childhelpusa.org/home

Child Find of America
1-800-426-5678

Child Help USA National Child Abuse Hotline
1-800-422-4453

Child Protective Services
1-800-922-5330
www.srskansas.org/services/child_protective_services.htm

Health Wave
P.O. Box 3599
Topeka, KS 66601
1-800-792-4884
1-800-792-4292 (TTY)
www.kansashealthwave.org

Heartspring (Institute of Logopedics)
8700 E. 29TH N
Wichita, KS 67226
www.heartspring.org

Kansas Big Brothers/Big Sisters
1-888-KS4-BIGS
www.ksbbs.org

Kansas Children's Service League
1-877-530-5275
www.kcsl.org

Kansas Department of Health and Environment
785-296-1500
www.kdheks.gov
e-mail: info@kdheks.gov

Kansas Society for Crippled Children
106 W. Douglas, Suite 900
Wichita, KS 67202
1-800-624-4530
316-262-4676
www.kssociety.org

National Runaway Switchboard
1-800-RUNAWAY
www.1800runaway.org/

National Society for Missing and Exploited Children
1-800-THE-LOST (843-5678)
www.missingkids.com

Parents Anonymous Help Line
1-800-345-5044
www.parentsanonymous.org/paIndex10.html

Runaway Line
1-800-621-4000
1-800-621-0394 (TDD)
www.1800runaway.org/

Talking Books
1-800-362-0699
www.skyways.lib.ks.us/KSL/talking/ksl_bph.html

Community Action

Peace Corps
1-800-424-8580
www.peacecorps.gov

Public Affairs Hotline (Kansas Corporation Commission)
1-800-662-0027
www.kcc.state.ks.us

Counseling

Care Counseling
Family counseling services for Kansas and Missouri
1-888-999-2196

Carl Feril Counseling
608 N Exchange (St. John)
620-549-6411

Castlewood Treatment Center for Eating Disorders
1-888-822-8938
www.castlewoodtc.com

Catholic Charities
1-888-468-6909
www.catholiccharitiessalina.org

Center for Counseling
5815 W Broadway (Great Bend)
1-800-875-2544

Central Kansas Mental Health Center
1-800-794-8281
Will roll over after hours to a crisis number.

Consumer Credit Counseling Services
1-800-279-2227
www.ksccecs.org/

Kansas Problem Gambling Hotline
1-866-662-3800

www.ksmhc.org/Services/gambling.htm

National Hopeline Network

1-800-SUICIDE (785-2433)

www.hopeline.com

National Problem Gambling Hotline

1-800-552-4700

www.npgaw.org

Samaritan Counseling Center

1602 N. Main Street
Hutchinson, KS 67501
620-662-7835

<http://cmc.pdswebpro.com/>

Self-Help Network of Kansas

1-800-445-0116

www.selfhelpnetwork.wichita.edu

Senior Health Insurance

Counseling

1-800-860-5260

www.agingkansas.org

Sunflower Family Services, Inc.

(adoption, crisis pregnancy, conflict solution center)

1-877-457-5437

www.sunflowerfamily.org

Disability Services

American Association of People with Disabilities (AAPD) www.aapd.com

American Council for the Blind

1-800-424-8666

www.acb.org

Americans with Disabilities Act Information Hotline

1-800-514-0301

1-800-514-0383 (TTY)

www.ada.gov

Disability Advocates of Kansas, Incorporated

1-866-529-3824

www.disabilitysecrets.com

Disability Group, Incorporated

1-888-236-3348

www.disabilitygroup.com

Disability Rights Center of Kansas (DRC)

Formerly Kansas Advocacy & Protective Services

1-877-776-1541

1-877-335-3725 (TTY)

www.drckansas.org

Hearing Healthcare Associates

1-800-448-0215

Kansas Commission for the Deaf and Hearing Impaired

1-800-432-0698

www.srskansas.org/kcdhh

Kansas Relay Center (Hearing Impaired service)

1-800-766-3777

www.kansasrelay.com

National Center for Learning Disabilities

1-888-575-7373

www.ncl.org

National Library Services for Blind & Physically Handicapped

www.loc.gov/nls/

1-800-424-8567

Parmelee Law Firm

8623 E 32nd Street N, Suite 100
(Wichita)

1-877-267-6300

Environment

Environmental Protection Agency

1-800-223-0425

913-321-9516 (TTY)

www.epa.gov

Kansas Department of Health and Environment

Salina 785-827-9639

Hays 785-625-5663

Topeka 785-296-1500

www.kdheks.gov

Food and Drug

Center for Food Safety and Applied Nutrition

1-888-SAFEFOOD (723-3366)

www.cfsan.fda.gov/

www.healthfinder.gov/docs/doc03647.htm

US Consumer Product Safety Commission
1-800-638-2772
1-800-638-8270 (TDD)
www.cpsc.gov

USDA Meat and Poultry Hotline
1-888-674-6854
1-800-256-7072 (TTY)
www.fsis.usda.gov/

U.S. Food and Drug Administration
1-888-INFO-FDA
1-888-463-6332
www.fsis.usda.gov/

Poison Hotline
1-800-222-1222

Health Services

American Cancer Society
1-800-227-2345
www.cancer.org

American Diabetes Association
1-800-DIABETES (342-2383)
www.diabetes.org

AIDS/HIV Center for Disease Control and Prevention
1-800-CDC-INFO
1-888-232-6348 (TTY)
www.cdc.gov/hiv/

AIDS/STD National Hot Line
1-800-342-AIDS
1-800-227-8922 (STD line)

American Health Assistance Foundation
1-800-437-2423
www.ahaf.org

American Heart Association
1-800-242-8721
www.americanheart.org

American Lung Association
1-800-586-4872

American Stroke Association
1-888-4-STROKE
www.americanheart.org

Center for Disease Control and Prevention
1-800-CDC-INFO
1-888-232-6348 (TTY)
www.cdc.gov/hiv/

Elder Care Helpline
www.eldercarelink.com

Eye Care Council
1-800-960-EYES
www.seetolearn.com

Kansas Foundation for Medical Care
1-800-432-0407
www.kfmc.org

National Health Information Center
1-800-336-4797
www.health.gov/nhic

National Cancer Information Center
1-800-227-2345
1-866-228-4327 (TTY)
www.cancer.org

National Institute on Deafness and Other Communication Disorders Information Clearinghouse
1-800-241-1044
1-800-241-1055 (TTY)
www.nidcd.nih.gov

Hospice

Hospice-Kansas Association
1-800-767-4965

Kansas Hospice and Palliative Care Organization
1-888-202-5433
www.lifeproject.org/akh.htm

Southwind Hospice, Incorporated
www.southwindhospice.com
785-483-3161

Housing

Kansas Housing Resources Corporation
785-296-2065
www.housingcorp.org

**US Department of Housing and
Urban Development**
Kansas Regional Office
913-551-5462

1-877-486-2048 (TTY)
www.cms.hhs.gov

Legal Services

Kansas Attorney General
1-800-432-2310 (Consumer Protection)
1-800-828-9745 (Crime Victims' Rights)
1-800-766-3777 (TTY)
www.ksag.org/

Kansas Bar Association
785-234-5696
www.ksbar.org

Kansas Department on Aging
1-800-432-3535
www.agingkansas.org/index.htm

Kansas Legal Services
1-800-723-6953
www.kansaslegalservices.org

**North Central-Flint Hills Area
Agency on Aging**
401 Houston (Manhattan)
1-800-432-2703
www.ncfhaaa.com

Medicaid Services

First Guard
1-888-828-5698
www.firstguard.com

Kansas Health Wave
1-800-792-4884 or 1-800-792-4292
(TTY)
www.kansashealthwave.org

Kansas Medical Assistance Program
Customer Service
1-800-766-9012
www.kmpa-state-ks.us/

Medicare Information
1-800-MEDICARE
www.medicare.gov

**U.S. Department of Health and
Human Services**
Centers for Medicare and Medicaid
Services
1-800-MEDICARE (1-800-633-4227) or

Mental Health Services

Alzheimer's Association
1-800-272-3900 or 1-866-403-3073
(TTY)
www.alz.org

**Developmental Services of
Northwest Kansas**
1-800-637-2229

Kansas Alliance for Mentally Ill
(Topeka, KS)
785-233-0755
www.namikansas.org

Make a Difference
1-800-332-6262

Mental Health America
1-800-969-6MHA (969-6642)

**National Alliance for the Mentally
Ill Helpline**
1-800-950-NAMI (950-6264) or 703-
516-7227 (TTY)
www.nami.org

National Institute of Mental Health
1-866-615-6464 or 1-866-415-8051
(TTY)
www.nimh.nih.gov

**National Library Services for Blind and
Physically Handicapped**
1-800-424-8567
www.loc.gov/nls/music/index.html

National Mental Health Association
1-800-969-6642
1-800-433-5959 (TTY)
www.nmha.org

Pawnee Mental Health

State Mental Health Agency KS
Department of Social and
Rehabilitation Services
915 SW Harrison Street
Topeka, KS 66612
785-296-3959
www.srskansas.org

Suicide Prevention Hotline
1-800-SUICIDE [784-2433] or
www.hopeline.com

Nutrition

American Dietetic Association
1-800-877-1600
www.eatright.org

**American Dietetic Association
Consumer Nutrition Hotline**
1-800-366-1655

Department of Human Nutrition
Kansas State University
119 Justin Hall
Manhattan, KS 66506
785-532-5500
www.humec.k-state.edu/hn/

**Eating Disorders Awareness and
Prevention**
1-800-931-2237
www.nationaleatingdisorders.org

Food Stamps
Kansas Department of Social and
Rehabilitation Services (SRS)
1-888-369-4777 or Local SRS office
[www.srskansas.org/ISD/ees/food_stamp
s.htm](http://www.srskansas.org/ISD/ees/food_stamp_s.htm)

**Kansas Department of Health and
Environment**
1000 SW Jackson, Suite 220
Topeka, KS 66612
785-296-1320
www.kdheks.gov/news-wic/index.html

Road and Weather Conditions

Kansas Road Conditions
1-866-511-KDOT
511
www.ksdot.org

Senior Services

Alzheimer's Association
1-800-487-2585

**American Association of Retired
Persons (AARP)**
1-888-OUR-AARP (687-2277)
www.aarp.org

**Americans with Disabilities Act
Information Line**
1-800-514-0301 or 1-800-514-0383
[TTY]
www.usdoj.gov/crt/ada

**American Association of Retired
Persons**
1-888-687-2277
www.aarp.org

Area Agency on Aging
1-800-432-2703

Eldercare Locator
1-800-677-1116
[www.eldercare.gov/eldercare/public/ho
me.asp](http://www.eldercare.gov/eldercare/public/home.asp)

Home Buddy
1-866-922-8339
www.homebuddy.org

Home Health Complaints Kansas
Department of Social and
Rehabilitation Services (SRS)
1-800-842-0078

**Kansas Advocates for Better Care
Inc.**
Consumer Information
1-800-525-1782
www.kabc.org

Kansas Department on Aging
1-800-432-3535 or 785-291-3167 (TTY)
www.agingkansas.org/index.htm

**Kansas Foundation for Medical
Care, Inc.**
Medicare Beneficiary Information
1-800-432-0407

Kansas Tobacco Use Quitline
1-866-KAN-STOP (526-7867)
www.kdheks.gov/tobacco/cessation.html

**Older Kansans Employment
Programs (OKEP)**
785-296-7842
www.kansascommerce.com

Older Kansans Hotline
1-800-742-9531

**Older Kansans Information
Reference Sources on Aging
(OKIRSA)**
1-800-432-3535

**Senior Health Insurance
Counseling for Kansas**
1-800-860-5260
www.agingkansas.org/SHICK/shick_index.html

SHICK
1-800-860-5260
www.agingkansas.org/SHICK

Social Security Administration
785-296-3959 or 785-296-1491 (TTY)
www.srskansas.org

SRS Rehabilitation Services Kansas
785-296-3959
785-296-1491 (TTY)
www.srskansas.org

Suicide Prevention

Suicide Prevention Services
1-800-784-2433
www.spsfv.org

Veterans

Federal Information Center
1-800-333-4636
www.FirstGov.gov

U.S. Department of Veterans Affairs
1-800-513-7731
www.kcva.org

Education (GI Bill)
1-888-442-4551

Health Resource Center
1-877-222-8387

Insurance Center
1-800-669-8477

**Veteran Special Issue Help
Line**
Includes Gulf War/Agent
Orange Helpline
1-800-749-8387

U.S. Department of Veterans Affairs

Mammography Helpline
1-888-492-7844

Other Benefits

1-800-827-1000

Memorial Program Service
[includes status of headstones and
markers]
1-800-697-6947

**Telecommunications Device for
the Deaf/Hearing Impaired**
1-800-829-4833 (TTY)
www.vba.va.gov

Veterans Administration

Veterans Administration Benefits
1-800-669-8477

Life Insurance
1-800-669-8477

Education (GI Bill)
1-888-442-4551

Health Care Benefits
1-877-222-8387

**Income Verification and
Means Testing**
1-800-929-8387

Mammography Helpline
1-888-492-7844

**Gulf War/Agent Orange
Helpline**
1-800-749-8387

**Status of Headstones and
Markers**
1-800-697-6947

**Telecommunications Device for
the Deaf**
1-800-829-4833
www.vba.va.gov

**Benefits Information and
Assistance**
1-800-827-1000

Debt Management
1-800-827-0648

**Life Insurance Information and
Service**
1-800-669-8477

Welfare Fraud Hotline

Welfare Fraud Hotline
1-800-432-3913

6. Detailed Exhibits
b. Patient Origin and .

County	Total Discharges		Pediatric Age 0 - 17		Age 18 - 44		Age 45 - 64		Age 65 - 74		Age 75+		Psychiatric		Obstetric	
	Cases	%	Cases	%	Cases	%	Cases	%	Cases	%	Cases	%	Cases	%	Cases	%
Pottawatomie, KS	295	49.9%	5	1.7%	14	4.7%	45	15.3%	34	11.5%	114	38.6%	3	1.0%	41	13.9%
Jackson, KS	104	17.6%	2	1.9%	10	9.6%	9	8.7%	10	9.6%	35	33.7%	1	1.0%	19	18.3%
Marshall, KS	74	12.5%	0	0.0%	4	5.4%	6	8.1%	15	20.3%	30	40.5%	0	0.0%	11	14.9%
Nemaha, KS	65	11.0%	0	0.0%	0	0.0%	9	13.8%	6	9.2%	25	38.5%	0	0.0%	12	18.5%
Shawnee, KS	18	3.0%	0	0.0%	1	5.6%	0	0.0%	0	0.0%	9	50.0%	0	0.0%	4	22.2%
Brown, KS	12	2.0%	0	0.0%	0	0.0%	10	83.3%	0	0.0%	0	0.0%	0	0.0%	1	8.3%
Wabaunsee, KS	10	1.7%	1	10.0%	0	0.0%	1	10.0%	0	0.0%	2	20.0%	0	0.0%	3	30.0%
Riley, KS	6	1.0%	0	0.0%	2	33.3%	0	0.0%	0	0.0%	0	0.0%	0	0.0%	3	50.0%
Other Counties	7	1.3%	1	14.3%	0	0.0%	0	0.0%	0	0.0%	2	28.6%	0	0.0%	2	28.6%
Hospital Total	591	100.0%	9	1.5%	31	5.2%	80	13.5%	65	11.0%	217	36.7%	4	0.7%	96	16.2%



Patient Origin by Hospital - Inpatient
Community Healthcare System Inc. - Onaga, KS
Federal Fiscal Year: 2013

Community HealthCare System

County	Total Discharges		Pediatric Age 0 - 17		Adult Medical/Surgical						Psychiatric		Obstetric		Newborn		Surg %		
	Cases	%	Cases	%	Age 18 - 44	Age 45 - 64	Age 65 - 74	Age 75+	Cases	%	Cases	%	Cases	%	Cases	%			
Pottawatomie, KS	368	49.3%	16	4.3%	13	3.5%	46	12.5%	59	16.0%	125	34.0%	1	0.3%	57	15.5%	51	13.9%	5.2%
Jackson, KS	166	22.2%	3	1.8%	7	4.2%	18	10.8%	26	15.7%	64	38.6%	2	1.2%	27	16.3%	19	11.4%	3.6%
Marshall, KS	95	12.7%	2	2.1%	0	0.0%	19	20.0%	11	11.6%	43	45.3%	0	0.0%	13	13.7%	7	7.4%	8.4%
Nemaha, KS	83	11.1%	1	1.2%	0	0.0%	14	16.9%	5	9.6%	30	36.1%	0	0.0%	15	18.1%	15	18.1%	10.8%
Shawnee, KS	14	1.9%	1	7.1%	0	0.0%	6	42.9%	0	0.0%	5	35.7%	0	0.0%	1	7.1%	1	7.1%	7.1%
Wabaunsee, KS	13	1.7%	1	7.7%	1	7.7%	0	0.0%	2	15.4%	4	30.8%	0	0.0%	3	23.1%	2	15.4%	23.1%
Other Counties	6	1.1%	0	0.0%	2	25.0%	2	25.0%	1	12.5%	1	12.5%	0	0.0%	1	12.5%	1	12.5%	12.5%
Hospital Total	747	100.0%	24	3.2%	23	3.1%	105	14.1%	107	14.3%	272	36.4%	3	0.4%	117	15.7%	96	12.9%	6.3%



Patient Origin by Hospital - Inpatient
Community Healthcare System Inc. - Onaga, KS
Federal Fiscal Year: 2014

Community HealthCare System

County	Total Discharges		Pediatric Age 0 - 17		Adult Medical/Surgical						Psychiatric		Obstetric		Newborn		Surg %		
	Cases	%	Cases	%	Age 18 - 44	Age 45 - 64	Age 65 - 74	Age 75+	Cases	%	Cases	%	Cases	%	Cases	%			
Pottawatomie, KS	295	49.9%	5	1.7%	14	4.7%	45	15.3%	34	11.5%	114	38.6%	3	1.0%	41	13.9%	39	13.2%	5.1%
Jackson, KS	104	17.6%	2	1.9%	10	9.6%	9	8.7%	10	9.6%	35	33.7%	1	1.0%	19	18.3%	10	17.3%	3.8%
Marshall, KS	74	12.5%	0	0.0%	4	5.4%	6	8.1%	15	20.3%	30	40.5%	0	0.0%	11	14.9%	6	10.8%	2.7%
Nemaha, KS	65	11.0%	0	0.0%	0	0.0%	9	13.8%	6	9.2%	25	38.5%	0	0.0%	12	18.5%	13	20.0%	9.2%
Shawnee, KS	18	3.0%	0	0.0%	1	5.6%	0	0.0%	0	0.0%	9	50.0%	0	0.0%	4	22.2%	4	22.2%	5.6%
Brown, KS	12	2.0%	0	0.0%	0	0.0%	10	83.3%	0	0.0%	0	0.0%	0	0.0%	1	8.3%	1	8.3%	0.0%
Wabaunsee, KS	10	1.7%	1	10.0%	0	0.0%	1	10.0%	0	0.0%	2	20.0%	0	0.0%	3	30.0%	3	30.0%	0.0%
Riley, KS	6	1.0%	0	0.0%	2	33.3%	0	0.0%	0	0.0%	0	0.0%	0	0.0%	3	50.0%	1	16.7%	33.3%
Other Counties	7	1.2%	1	14.3%	0	0.0%	0	0.0%	0	0.0%	2	28.6%	0	0.0%	2	28.6%	2	28.6%	28.6%
Hospital Total	591	100.0%	9	1.5%	31	5.2%	80	13.5%	65	11.0%	217	36.7%	4	0.7%	96	16.2%	89	15.1%	5.4%



Patient Origin by Hospital - Inpatient
Community Healthcare System Inc. - Onaga, KS
Federal Fiscal Year: 2015

Community HealthCare System

County	Total Discharges		Pediatric Age 0 - 17		Adult Medical/Surgical						Psychiatric		Obstetric		Newborn		Surg %		
	Cases	%	Cases	%	Age 18 - 44	Age 45 - 64	Age 65 - 74	Age 75+	Cases	%	Cases	%	Cases	%	Cases	%			
Pottawatomie, KS	264	47.7%	14	5.3%	9	3.4%	37	14.0%	24	9.1%	110	41.7%	2	0.8%	34	12.9%	34	12.9%	3.4%
Jackson, KS	126	22.8%	2	1.6%	6	4.8%	15	11.9%	24	19.0%	48	38.1%	3	2.4%	14	11.1%	14	11.1%	7.1%
Nemaha, KS	71	12.8%	7	9.9%	7	9.9%	13	18.3%	6	8.5%	20	28.2%	0	0.0%	9	12.7%	9	12.7%	7.0%
Marshall, KS	58	10.5%	3	5.2%	3	5.2%	10	17.2%	4	6.9%	31	53.4%	1	1.7%	3	5.2%	3	5.2%	5.2%
Wabaunsee, KS	12	2.2%	1	8.3%	0	0.0%	0	0.0%	1	8.3%	4	33.3%	0	0.0%	3	25.0%	3	25.0%	16.7%
Shawnee, KS	9	1.6%	1	11.1%	0	0.0%	1	11.1%	1	11.1%	4	44.4%	0	0.0%	1	11.1%	1	11.1%	0.0%
Riley, KS	5	0.9%	1	20.0%	2	40.0%	0	0.0%	0	0.0%	0	0.0%	0	0.0%	1	20.0%	1	20.0%	20.0%
Other Counties	6	1.4%	0	0.0%	1	12.5%	4	50.0%	2	25.0%	1	12.5%	0	0.0%	0	0.0%	0	0.0%	0.0%
Hospital Total	553	100.0%	29	5.2%	28	5.1%	80	14.5%	62	11.2%	218	39.4%	6	1.1%	65	11.8%	65	11.8%	5.2%



Patient Origin by Region - Inpatient
 Pottawatomie, KS Residents Treated in KHA Reporting Area
 Federal Fiscal Year: 2013

Hospital	Total Discharges		Pediatric Age 0 - 17		Adult Medical/Surgical						Psychiatric		Obstetric		Newborn		Surg %		
	Cases	%	Cases	%	Age 16 - 44	Age 45 - 64	Age 65 - 74	Age 75+	Cases	%	Cases	%	Cases	%	Cases	%			
Via Christi Hospital Manhattan, Inc. - Manhattan, KS	556	30.3%	11	2.0%	37	6.7%	88	15.6%	79	14.2%	136	24.5%	1	0.2%	105	18.9%	99	17.8%	24.5%
Community Healthcare System Inc. - Onaga, KS	358	20.1%	16	4.3%	13	3.5%	46	12.5%	59	16.0%	125	34.0%	1	0.3%	57	15.5%	51	13.9%	5.2%
Stormont-Vail HealthCare - Topeka, KS	353	19.2%	20	5.7%	23	6.5%	89	25.2%	57	16.1%	80	22.7%	36	10.2%	26	7.4%	22	6.2%	29.2%
St. Francis Health - Topeka, KS	211	11.5%	6	2.8%	9	4.3%	54	25.6%	35	16.6%	56	26.5%	1	0.5%	26	12.3%	24	11.4%	44.5%
Wamego Health Center - Wamego, KS	137	7.5%	4	2.9%	4	2.9%	11	8.0%	12	8.8%	105	76.6%	1	0.7%	0		0		
The University of Kansas Hospital - Kansas City, KS	77	4.2%	2	2.6%	25	32.5%	37	48.1%	5	6.5%	4	5.2%	2	2.6%	1	1.3%	1	1.3%	49.4%
Saint Luke's Hospital of Kansas City - Kansas City, MO	22	1.2%	0		0		4	18.2%	5	22.7%	13	59.1%	0		0		0		54.5%
Children's Mercy Kansas City - Kansas City, MO	16	0.9%	16	100.0%	0		0		0		0		0		0		0		50.0%
Salina Regional Health Center - Salina, KS	9	0.5%	0		3	33.3%	2	22.2%	0		1	11.1%	3	33.3%	0		0		44.4%
Fredonia Regional Hospital - Fredonia, KS	6	0.4%	0		0		0		2	25.0%	0		6	75.0%	0		0		
Wesley Medical Center - Wichita, KS	8	0.4%	0		2	25.0%	0		1	12.5%	3	37.5%	0		1	12.5%	1	12.5%	62.5%
Geary Community Hospital - Junction City, KS	7	0.4%	0		0		3	42.9%	0		0		2	28.6%	1	14.3%	1	14.3%	28.6%
Lawrence Memorial Hospital - Lawrence, KS	7	0.4%	0		2	28.6%	0		1	14.3%	0		0		2	28.6%	2	28.6%	14.3%
Menorah Medical Center - Overland Park, KS	7	0.4%	0		0		6	85.7%	1	14.3%	0		0		0		0		85.7%
Kansas Residents/Minnesota Hospitals	6	0.3%	0		0		5	83.3%	0		1	16.7%	0		0		0		86.7%
Kansas Residents/Nebraska Hospitals	6	0.3%	0		4	66.7%	0		0		2	33.3%	0		0		0		16.7%
Via Christi Hospitals Wichita, Inc. - Wichita, KS	5	0.3%	0		3	60.0%	2	40.0%	0		0		0		0		0		60.0%
Overland Park Regional Medical Center - Overland Park, KS	5	0.3%	0		0		3	60.0%	0		0		0		1	20.0%	1	20.0%	40.0%
Children's Mercy Hospital Kansas - Overland Park, KS	5	0.3%	5	100.0%	0		0		0		0		0		0		0		
Other Hospitals	21	1.1%	0		3	14.3%	4	19.0%	0		2	9.5%	6	28.6%	4	19.0%	2	9.5%	33.3%
Hospital Total	1,834	100.0%	80	4.4%	128	7.0%	354	19.3%	257	14.0%	528	28.8%	59	3.2%	224	12.2%	204	11.1%	24.3%



Patient Origin by Region - Inpatient
 Pottawatomie, KS Residents Treated in KHA Reporting Area
 Federal Fiscal Year: 2014

Hospital	Total Discharges		Pediatric Age 0 - 17		Adult Medical/Surgical						Psychiatric		Obstetric		Newborn		Surg %		
	Cases	%	Cases	%	Age 16 - 44	Age 45 - 64	Age 65 - 74	Age 75+	Cases	%	Cases	%	Cases	%	Cases	%			
Stormont-Vail HealthCare - Topeka, KS	490	26.0%	32	6.5%	30	6.1%	125	25.5%	64	13.1%	110	22.4%	52	10.6%	41	8.4%	36	7.3%	26.3%
Via Christi Hospital Manhattan, Inc. - Manhattan, KS	468	25.6%	6	1.3%	17	3.6%	79	16.8%	66	14.1%	104	22.2%	5	1.1%	66	14.1%	66	14.1%	26.0%
Community Healthcare System Inc. - Onaga, KS	295	16.1%	5	1.7%	14	4.7%	45	15.3%	34	11.5%	114	38.6%	3	1.0%	41	13.9%	39	13.2%	5.1%
St. Francis Health - Topeka, KS	201	11.0%	3	1.5%	15	7.5%	80	29.9%	38	18.9%	43	21.4%	1	0.5%	20	10.0%	21	10.4%	41.8%
Wamego Health Center - Wamego, KS	164	9.0%	2	1.2%	5	3.0%	16	9.8%	35	21.3%	104	63.4%	2	1.2%	0		0		
The University of Kansas Hospital - Kansas City, KS	69	3.8%	1	1.4%	20	29.0%	25	36.2%	16	23.2%	4	5.8%	0		2	2.9%	1	1.4%	52.2%
Children's Mercy Kansas City - Kansas City, MO	31	1.7%	26	90.3%	1	3.2%	0		0		0		0		1	3.2%	1	3.2%	35.5%
Saint Luke's Hospital of Kansas City - Kansas City, MO	11	0.6%	0		3	27.3%	1	9.1%	3	27.3%	4	36.4%	0		0		0		36.4%
Geary Community Hospital - Junction City, KS	9	0.5%	0		0		4	44.4%	1	11.1%	2	22.2%	0		1	11.1%	1	11.1%	44.4%
Salina Regional Health Center - Salina, KS	8	0.4%	0		0		0		1	12.5%	0		7	87.5%	0		0		12.5%
Kansas Residents/Minnesota Hospitals	7	0.4%	0		0		0		3	42.9%	1	14.3%	3	42.9%	0		0		42.9%
Kansas Residents/Other Missouri Hospitals	6	0.3%	1	16.7%	0		1	16.7%	0		1	16.7%	3	50.0%	0		0		
Holton Community Hospital - Holton, KS	6	0.3%	0		0		1	16.7%	1	16.7%	0		0		2	33.3%	2	33.3%	
Overland Park Regional Medical Center - Overland Park, KS	6	0.3%	0		0		2	33.3%	0		1	16.7%	1	16.7%	1	16.7%	1	16.7%	33.3%
Shawnee Mission Health - Shawnee Mission, KS	5	0.3%	0		1	20.0%	2	40.0%	0		0		2	40.0%	0		0		60.0%
Other Hospitals	52	2.8%	3	5.8%	6	11.5%	14	26.9%	4	7.7%	4	7.7%	9	17.3%	7	13.5%	5	9.6%	36.5%
Hospital Total	1,829	100.0%	81	4.4%	112	6.1%	375	20.5%	280	15.6%	492	26.9%	88	4.8%	202	11.0%	193	10.6%	23.7%



Patient Origin by Region - Inpatient
 Pottawatomie, KS Residents Treated in KHA Reporting Area
 Federal Fiscal Year: 2015

Hospital	Total Discharges		Pediatric		Adult Medical/Surgical						Psychiatric		Obstetric		Newborn		Surg %		
	Cases	%	Cases	%	Age 0 - 44	Age 45 - 64	Age 65 - 74	Age 75+	Cases	%	Cases	%	Cases	%	Cases	%			
Via Christi Hospital Manhattan, Inc. - Manhattan, KS	494	27.7%	3	0.6%	16	3.6%	62	16.0%	86	17.0%	132	26.7%	1	0.2%	62	16.6%	66	17.0%	14.2%
Stromont-Vail HealthCare - Topeka, KS	400	26.2%	37	7.9%	34	7.3%	110	23.5%	69	14.7%	94	20.1%	42	9.0%	40	8.5%	42	9.0%	30.6%
Community Healthcare System Inc. - Onaga, KS	264	14.8%	14	5.3%	9	3.4%	37	14.0%	24	9.1%	110	41.7%	2	0.8%	34	12.9%	34	12.9%	3.4%
St. Francis Health - Topeka, KS	166	10.4%	3	1.6%	15	8.1%	39	21.0%	30	16.1%	53	28.5%	2	1.1%	23	12.4%	21	11.3%	37.6%
Wamego Health Center - Wamego, KS	147	8.2%	0	0	4	2.7%	22	15.0%	28	19.0%	91	61.9%	2	1.4%	0	0	0	0	0
The University of Kansas Hospital - Kansas City, KS	70	4.4%	0	0	20	25.6%	47	60.3%	4	5.1%	4	5.1%	2	2.6%	1	1.3%	0	0	55.1%
Children's Mercy Kansas City - Kansas City, MO	34	1.9%	32	94.1%	2	5.9%	0	0	0	0	0	0	0	0	0	0	0	0	52.9%
Salina Regional Health Center - Salina, KS	13	0.7%	0	0	4	30.8%	0	0	0	1	7.7%	8	61.5%	0	0	0	0	0	0
Saint Luke's Hospital of Kansas City - Kansas City, MO	13	0.7%	0	0	1	7.7%	3	23.1%	3	23.1%	5	38.5%	0	0	1	7.7%	0	0	76.9%
Kansas Residents/Nebraska Hospitals	9	0.5%	0	0	2	22.2%	1	11.1%	2	22.2%	0	0	0	0	2	22.2%	2	22.2%	22.2%
Geary Community Hospital - Junction City, KS	9	0.5%	0	0	2	22.2%	3	33.3%	0	0	0	0	0	0	2	22.2%	2	22.2%	55.0%
Shawnee Mission Health - Shawnee Mission, KS	9	0.5%	0	0	1	11.1%	0	0	1	11.1%	6	66.7%	1	11.1%	0	0	0	0	22.2%
Overland Park Regional Medical Center - Overland Park, KS	8	0.4%	0	0	0	0	2	25.0%	2	25.0%	1	12.5%	0	0	2	25.0%	1	12.5%	37.5%
Kansas Residents/Other Missouri Hospitals	7	0.4%	1	14.3%	0	0	1	14.3%	2	28.6%	0	0	3	42.9%	0	0	0	0	14.3%
Via Christi Hospitals Wichita, Inc. - Wichita, KS	7	0.4%	0	0	1	14.3%	5	71.4%	1	14.3%	0	0	0	0	0	0	0	0	42.9%
Memorial Health System - Abilene, KS	6	0.3%	0	0	0	0	0	0	0	0	0	0	6	100.0%	0	0	0	0	0
Menorah Medical Center - Overland Park, KS	5	0.3%	0	0	0	0	3	60.0%	2	40.0%	0	0	0	0	0	0	0	0	60.0%
Other Hospitals	26	1.5%	2	7.7%	7	26.9%	3	11.5%	1	3.8%	6	23.1%	4	15.4%	3	11.5%	0	0	35.0%

© 2016 Hospital Industry Data Institute
 Feb 16, 2016

1

3:07:52 PM

Hospital Total	1,783	100.0%	92	5.2%	120	6.7%	358	20.1%	257	14.4%	503	28.2%	73	4.1%	190	10.7%	190	10.7%	22.8%
-----------------------	--------------	---------------	-----------	-------------	------------	-------------	------------	--------------	------------	--------------	------------	--------------	-----------	-------------	------------	--------------	------------	--------------	--------------

© 2016 Hospital Industry Data Institute
 Feb 16, 2016

2

3:07:52 PM

6. Detailed Exhibits

c. Town Hall and Community Input Participants

Community Health Needs Assessment Town Hall Meeting 11/3/2015				
#	Name	Title	Organization	Address
1	Leslie Campbell	Pottawatomie County Health Department Director	Pottawatomie County Health Department	320 Main Westmoreland, KS 66549
2	Todd Willert	Chief Executive Officer	CHCS	120 W. 8th Onaga, KS 66521
3	Marcia Walsh	Chief Operating Officer	CHCS	120 W. 8th Onaga, KS 66521
4	Susie Kufahl	Director of Communication and Development	CHCS	120 W. 8th Onaga, KS 66521
5	Maye Megner	Community Member	N/A	685 Newman Road Havensville, KS
6	Mary Abitz	RN	Pottawatomie County Health Department	320 Main Westmoreland, KS 66549
7	Stan Hartwich	Commissioner	Pottawatomie County	207 N. 1st Westmoreland, KS 66549
8	Adam McDaniel	Superintendent	USD322	500 High School Onaga, KS 66521
9	Mindy Robbins	Community Services Manager	CHCS	120 W. 8th Onaga, KS 66521

Community Health Needs Assessment Town Hall Meeting 11/5/2015				
	Name	Title	Organization	Address
1	Susie Kufahl	Director of Communication and Development	CHCS	120 W. 8th Onaga, KS 66521
2	Helen Pauly	St. Marys Chamber Director	St. Marys Chamber	P.O. Box 3 St. Marys, KS 66536
3	Leslie Campbell	Pottawatomie County Health Department Director	Pottawatomie County	320 Main Westmoreland, KS 66549
4	Rod Evans	Chief Information Officer	CHCS	120 W. 8th Onaga, KS 66521
5	Ryan Meireis	Store Manager	Rays Apple Market	801 E. Jesuit Lane St. Marys, KS
6	Penny Kahrs	Community Member	N/A	12637 NW 62nd St. Rossville, KS
7	Ray Kahrs	Community Member	N/A	12637 NW 62nd St. Rossville, KS
8	Todd Willert	Chief Executive Officer	CHCS	120 W. 8th Onaga, KS 66521
9	Michael Bomberger	Director	CHCS	120 W. 8th Onaga, KS 66521
10	Mindy Robbins	Community Services Manager	CHCS	120 W. 8th Onaga, KS 66521

Chamber Meeting- Onaga, Havensville, Wheaton 11/12/2015				
	Name	Title	Organization	Address
1	Susie Kufahl	Director of Communication and Development	CHCS	120 W. 8th Onaga, KS 66521
2	Frank Kohman	Club Manager	Cool Springs Golf Course	20770 Kelly Creek Rd. Onaga, KS 66521
3	Randy Kufahl	Vice President	Farmers State Bank	301 Leonard St. Onaga, KS 66521
4	Adam McDaniel	Superintendent	USD 322	500 High School Onaga, KS 66521
5	Mae Barnes			
6	Jo Lynn Barnes			
7	Jayne Jepson			
8	Annette Cline	Owner	Cline Realty & Auction	309 Leonard St. Onaga, KS 66521
9	Tammy Jordan			
10	Joe Harder	Publisher/Editor	The Onaga Herald	302 Leonard St. Onaga, KS 66521
11	Linda Price			
12	Dea Graf			
13	Debra Stallard			
14	Scott Venneberg			

15	Bob Venneberg			
16	Terry Force	Land Surveyor	Surveying Services	342 Main St. Onaga, KS 66521

Medical Staff Meeting 2/10/2016				
	Name	Title	Organization	Address
1	Dr. Marcus Weiser	Chief of Staff	CHCS	120 W. 8 th St. Onaga, KS 66521
2	Dr. Tom Walsh	Physician	CHCS	120 W. 8 th St. Onaga, KS 66521
3	Dr. Nick Cahoj	Vice-Chief of Staff	CHCS	120 W. 8 th St. Onaga, KS 66521
4	Dr. Neilson Meriwether	Physician	CHCS	120 W. 8 th St. Onaga, KS 66521
5	Dr. Melissa Goulart	Physician	CHCS	120 W. 8 th St. Onaga, KS 66521
6	Dr. Greg Welle	Physician	CHCS	120 W. 8 th St. Onaga, KS 66521
7	Dr. Mark Synovec	Physician	CHCS	120 W. 8 th St. Onaga, KS 66521
8	Dr. John Kelley	Physician	CHCS	120 W. 8 th St. Onaga, KS 66521
9	Dr. Chance Williams	Physician	CHCS	120 W. 8 th St. Onaga, KS 66521
10	Dr. C. Bruce Carroll	Physician	CHCS	120 W. 8 th St. Onaga, KS 66521
11	Dr. Nancy Zidek	Physician	CHCS	120 W. 8 th St. Onaga, KS 66521
12	Nancy Bosse	APRN	CHCS	120 W. 8 th St. Onaga, KS 66521
13	Cornelia Campbell	APRN	CHCS	120 W. 8 th St. Onaga, KS 66521
14	Julia Ingwerson	APRN	CHCS	120 W. 8 th St. Onaga, KS 66521
15	Jeremy Brandt	PA	CHCS	120 W. 8 th St. Onaga, KS 66521
16	Michele Reisinger	APRN	CHCS	120 W. 8 th St. Onaga, KS 66521
17	Elaine Rethman	RN	CHCS	120 W. 8 th St. Onaga, KS 66521
18	Sheila Talley	PA	CHCS	120 W. 8 th St. Onaga, KS 66521
19	Jana Kramer	PA	CHCS	120 W. 8 th St. Onaga, KS 66521
20	Heather Myers	APRN	CHCS	120 W. 8 th St. Onaga, KS 66521
21	Todd Willert	CEO	CHCS	120 W. 8 th St. Onaga, KS 66521
22	Marcia Walsh	COO	CHCS	120 W. 8 th St. Onaga, KS 66521
23	Lorraine Meyer	Risk Management Director	CHCS	120 W. 8 th St. Onaga, KS 66521
24	Roz Lewis	CNO	CHCS	120 W. 8 th St. Onaga, KS 66521

25	Melissa Talley	Director of IT	CHCS	120 W. 8 th St. Onaga, KS 66521
26	Mindy Robbins	Community Services Manager	CHCS	120 W. 8 th St. Onaga, KS 66521
27	Alisa Browning	Executive Assistant	CHCS	120 W. 8 th St. Onaga, KS 66521
28	Liz Murphy	Onaga Clinic Access Services	CHCS	120 W. 8 th St. Onaga, KS 66521
29	Pat Flentie	Lead Nurse Onaga	CHCS	120 W. 8 th St. Onaga, KS 66521
30	Justin Boswell	Board President	CHCS	120 W. 8 th St. Onaga, KS 66521

6. Detailed Exhibits

d. Public Notice

Pottawatomie County Community Health Needs Assessment

Community HealthCare System(CHCS) and the Pottawatomie County Health Department are seeking your input regarding the health of county citizens. These two organizations are conducting a Community Health Needs Assessment in follow up to one they conducted in 2012. Task forces within Pottawatomie County have worked on priority areas of identified need, including mental health, prevention, nutrition and obesity. Every three years, citizens are encouraged to participate in the county-wide health reassessment with updated statistics and input.

CHCS and Pottawatomie County Health Department extend an invitation to the public to attend one of two town hall meetings planned: Tuesday, November 3rd at 5:00 PM at the Senior Center, 200 Bypass Road, Onaga, KS and Thursday, November 5th at 12:30 PM at the George J Perry Memorial Armory, 110 South 5th Street, St. Marys, KS.

PUBLIC INVITED

Your input is needed!

Pottawatomie County
Community Health Needs Assessment

The Pottawatomie County Health Department and
Community HealthCare System are sponsoring
community discussion. Please plan to attend one
of these presentations:

Tuesday, November 3rd at 5:00 PM
at the Senior Center
200 Bypass Road, Onaga, KS

OR

Thursday, November 5th at 12:30 PM
at the George J Perry Memorial Armory
110 South 5th Street, St. Marys, KS.

A light meal will be provided at each meeting.



PUBLIC INVITED

Your input is needed!

Pottawatomie County
Community Health Needs Assessment

The Pottawatomie County Health Department and
Community HealthCare System are sponsoring
community discussion.

Please plan to attend one of these presentations:

Tuesday, November 3rd at 5:00 PM

at the Senior Center
200 Bypass Road, Onaga, KS

OR

Thursday, November 5th at 12:30 PM

at the George J Perry Memorial Armory
110 South 5th Street, St. Marys, KS.

A light meal will be provided at each meeting.



CHNA report
questions contact:

Susie Kufahl

Community HealthCare System

Director of Communications & Development

120 W. 8th St., Onaga, KS 66521

(785) 889-5133 (O)

susiekufahl@chcsks.org

Leslie Campbell

Pottawatomie County Health Department

Health Director

320 Main, Westmoreland, KS 66549

(785) 457-3719 (O)

lcampbell@pottcounty.org